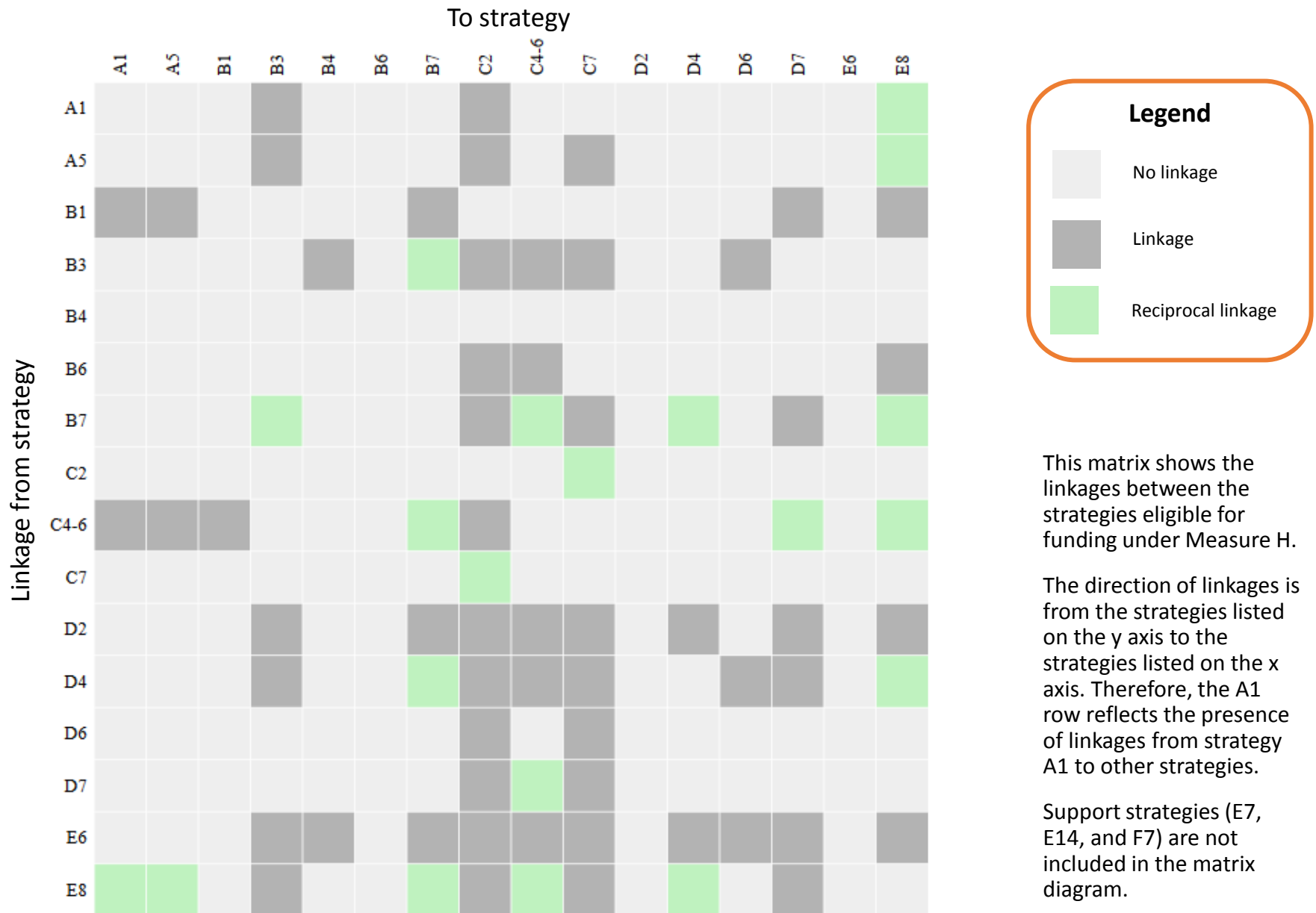


Matrix of Linkages of Measure H Homelessness Initiative Strategies

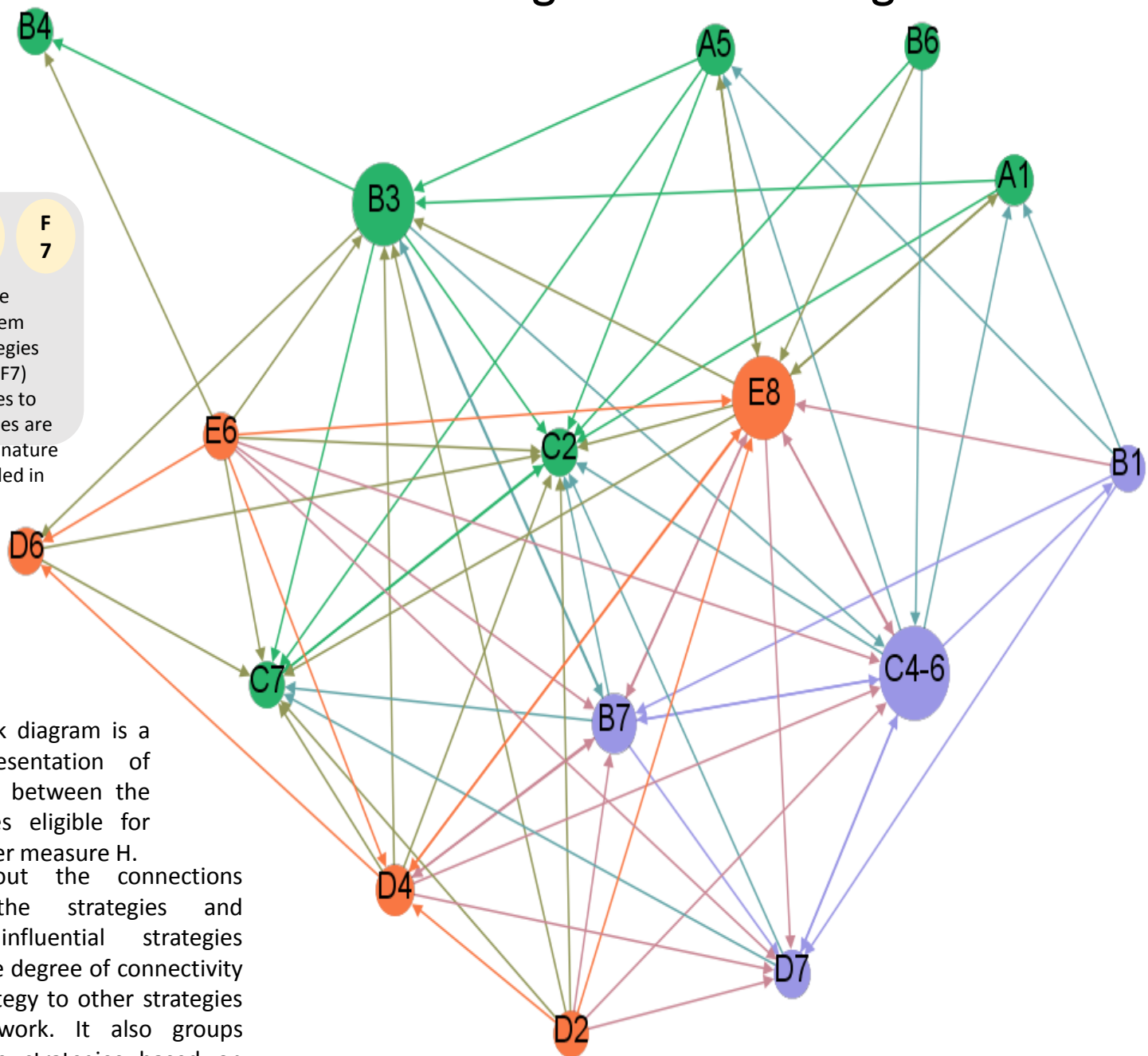


Measure H Strategies Network Diagram

E 7 **E 14** **F 7**

To simplify the diagram, system support strategies (E7, E14, and F7) whose linkages to other strategies are supportive in nature are not included in the diagram.

This network diagram is a visual representation of the linkages between the 21 strategies eligible for funding under measure H. It maps out the connections between the strategies and identifies influential strategies based on the degree of connectivity of each strategy to other strategies in the network. It also groups together like strategies based on



Legend

Direction of linkage

Size of circles indicate how influential a strategy is within the network (larger circles indicate larger influence)

Strategies providing services to clients needing less intensive, shorter term services

Strategies providing services to clients needing more intensive, longer term services

Strategies providing services to clients whose needs range from less to more intensive services

Linkages between strategies serving clients needing less intensive services

Linkages between strategies serving clients needing more intensive services

Linkages between strategies serving clients whose needs range from less to more intensive services

Linkages connecting strategies from different groups, e.g. from those serving clients with needing more intensive services to strategies serving

Strategy A1 – Homeless Prevention Program for Families

- ↔ LINKAGE TO C2
- ↔ LINKAGE TO B3
- ↔ LINKAGE TO C4-C6 (*if ineligible for strategy A1*)
- ↔ LINKAGE TO E8 (*if client referred to B3 and while rapid re-housing slots are unavailable*)

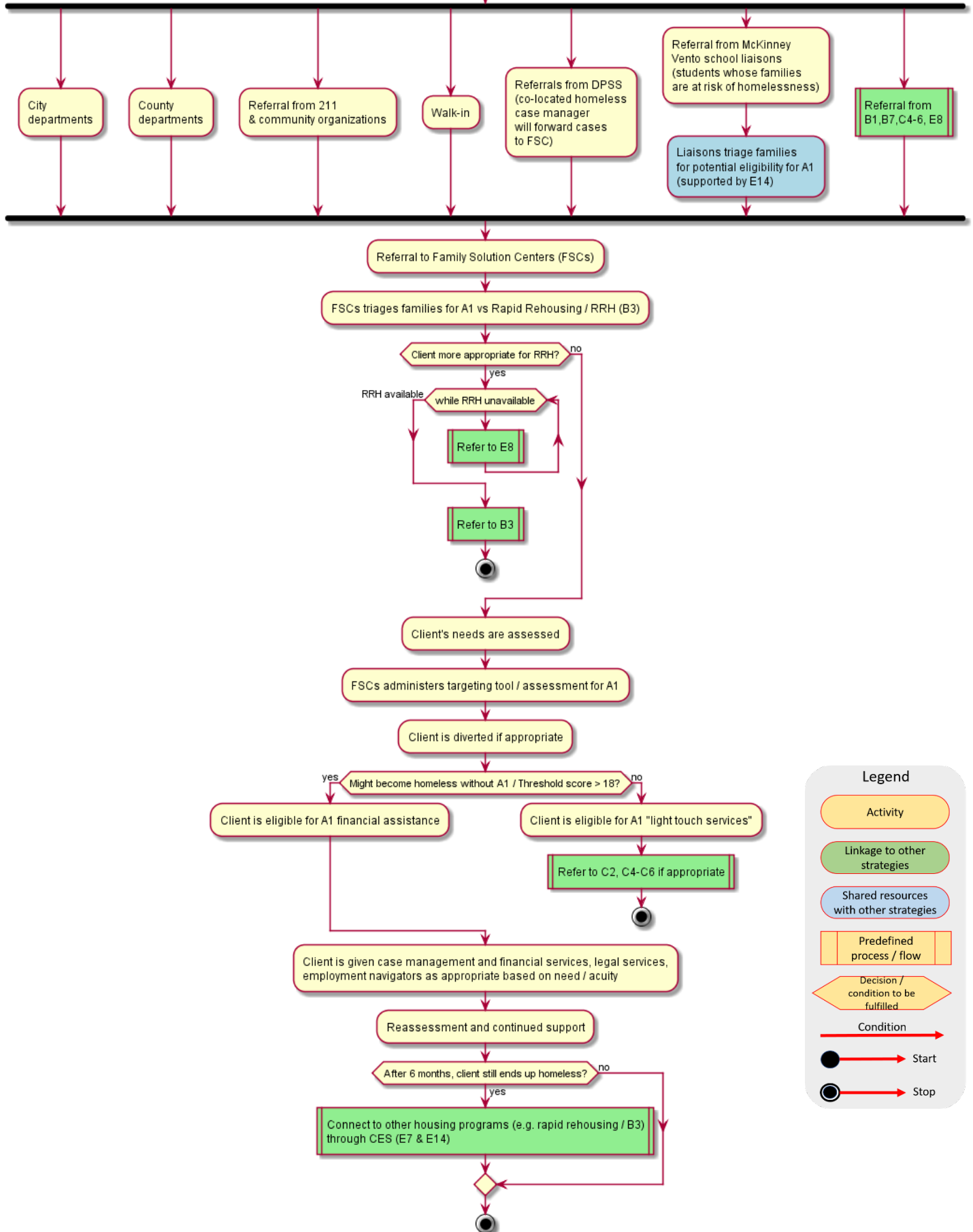
- ⇒ LINKAGE FROM B1 (*when shallow subsidy needed after B1 subsidy ends*)
- ⇒ LINKAGE FROM B7 (*when client can be diverted or shelter is not needed*)
- ⇒ LINKAGE FROM C4-C6 (*if shallow subsidy needed after SSI approval*)
- ⇒ LINKAGE FROM E8 (*if E8 client can be diverted/shelter is not needed*)

- ☑ SUPPORTED BY E7
- ☑ SUPPORTED BY E14

DEFINITIONS

- ↔ **LINKAGE TO:** This strategy refers or hands off clients to the other strategy.
- ⇒ **LINKAGE FROM:** Clients are referred or handed off to this strategy from the other strategy.
- ↔ **RECIPROCAL LINKAGE:** This strategy can be both source or destination of client referrals or hand-offs to/from the other strategy.
- ☑ **SUPPORTS:** Strategy facilitates referrals or hand-offs from/to the other strategy, or provides resources (e.g., staff or case management) for its functions.
- ☑ **SUPPORTED BY:** The other strategy facilitates referrals or hand-offs from/to this strategy, or provides resources (e.g., staff or case management) for its functions

Strategy A1



Legend

Activity

Linkage to other strategies

Shared resources with other strategies

Predefined process / flow

Decision / condition to be fulfilled

Condition

Start

Stop

Strategy A5 – Homeless Prevention Program for Individuals

- ↔ LINKAGE TO B3 (*clients who lose housing even after receiving assistance*)
- ↔ LINKAGE TO C2
- ↔ LINKAGE TO C4-C6 (*linkage if ineligible for strategy A5*)
- ↔ LINKAGE TO C7
- ↔ LINKAGE TO E8 (*if client referred to B3 and while rapid re-housing slots are unavailable*)

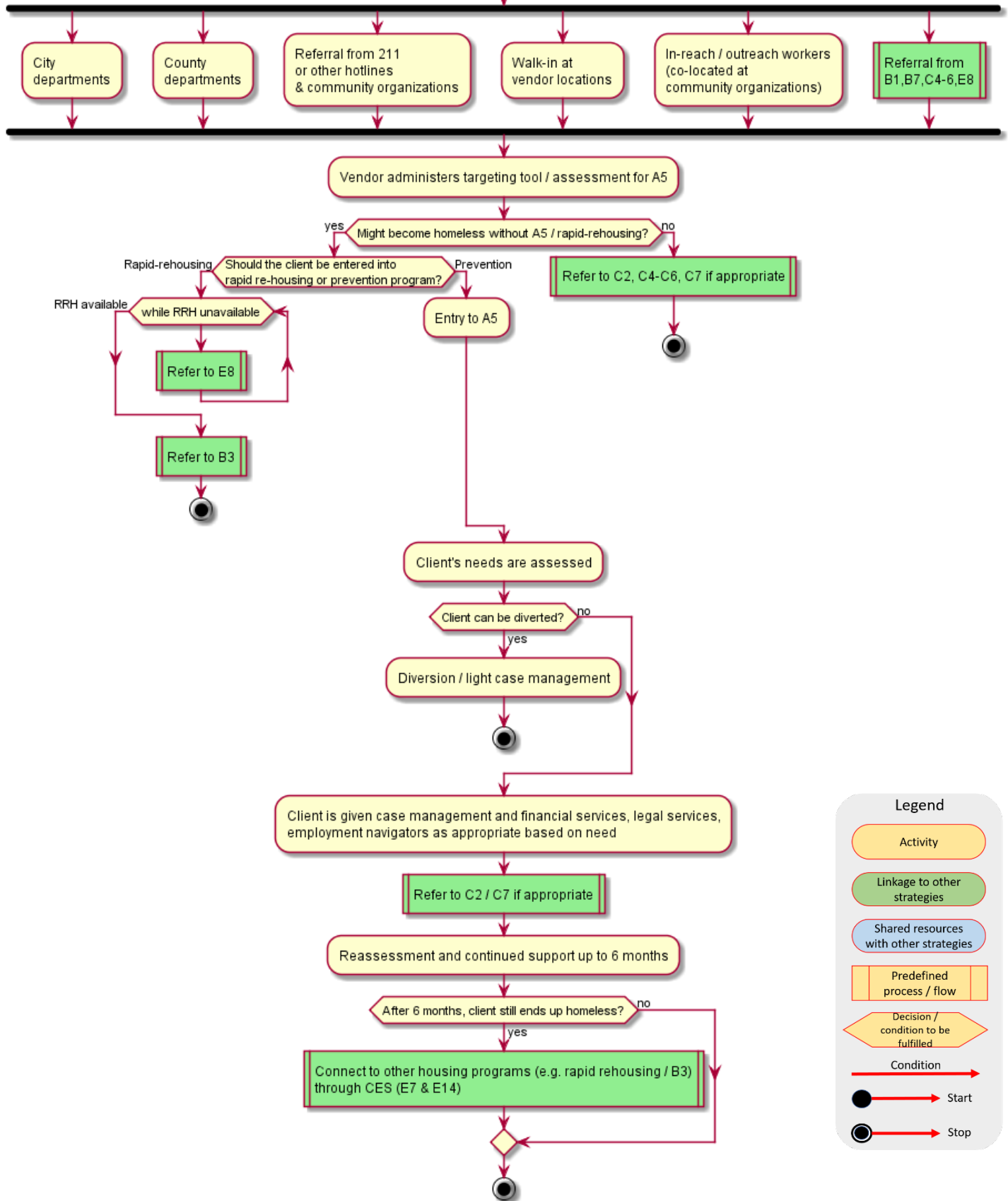
- ⇒ LINKAGE FROM B1 (*when shallow subsidy needed after B1 subsidy ends*)
- ⇒ LINKAGE FROM B7 (*when client can be diverted or shelter is not needed*)
- ⇒ LINKAGE FROM C4-C6 (*if shallow subsidy needed after SSI approval*)
- ⇒ LINKAGE FROM E8 (*if E8 client can be diverted/shelter is not needed*)

- ☑ SUPPORTED BY E7
- ☑ SUPPORTED BY E14

DEFINITIONS

- ↔ **LINKAGE TO:** This strategy refers or hands off clients to the other strategy.
- ⇒ **LINKAGE FROM:** Clients are referred or handed off to this strategy from the other strategy.
- ↔ **RECIPROCAL LINKAGE:** This strategy can be both source or destination of client referrals or hand-offs to/from the other strategy.
- ☑ **SUPPORTS:** Strategy facilitates referrals or hand-offs from/to the other strategy, or provides resources (e.g., staff or case management) for its functions.
- ☑ **SUPPORTED BY:** The other strategy facilitates referrals or hand-offs from/to this strategy, or provides resources (e.g., staff or case management) for its functions

Strategy A5



Legend

Activity

Linkage to other strategies

Shared resources with other strategies

Predefined process / flow

Decision / condition to be fulfilled

Condition

Start

Stop

Strategy B1 – Provide Subsidized Housing to Homeless Disabled Individuals Pursuing SSI

↔ LINKAGE TO A1/A5 (*if client is assessed to need shallow subsidy when B1 subsidy is terminated*)

↔ LINKAGE TO B7

↔ LINKAGE TO D7

↔ LINKAGE TO E8

⇒ LINKAGE FROM C4-6

☑ SUPPORTED BY E7

☑ SUPPORTED BY E14

DEFINITIONS

↔ **LINKAGE TO:** This strategy refers or hands off clients to the other strategy.

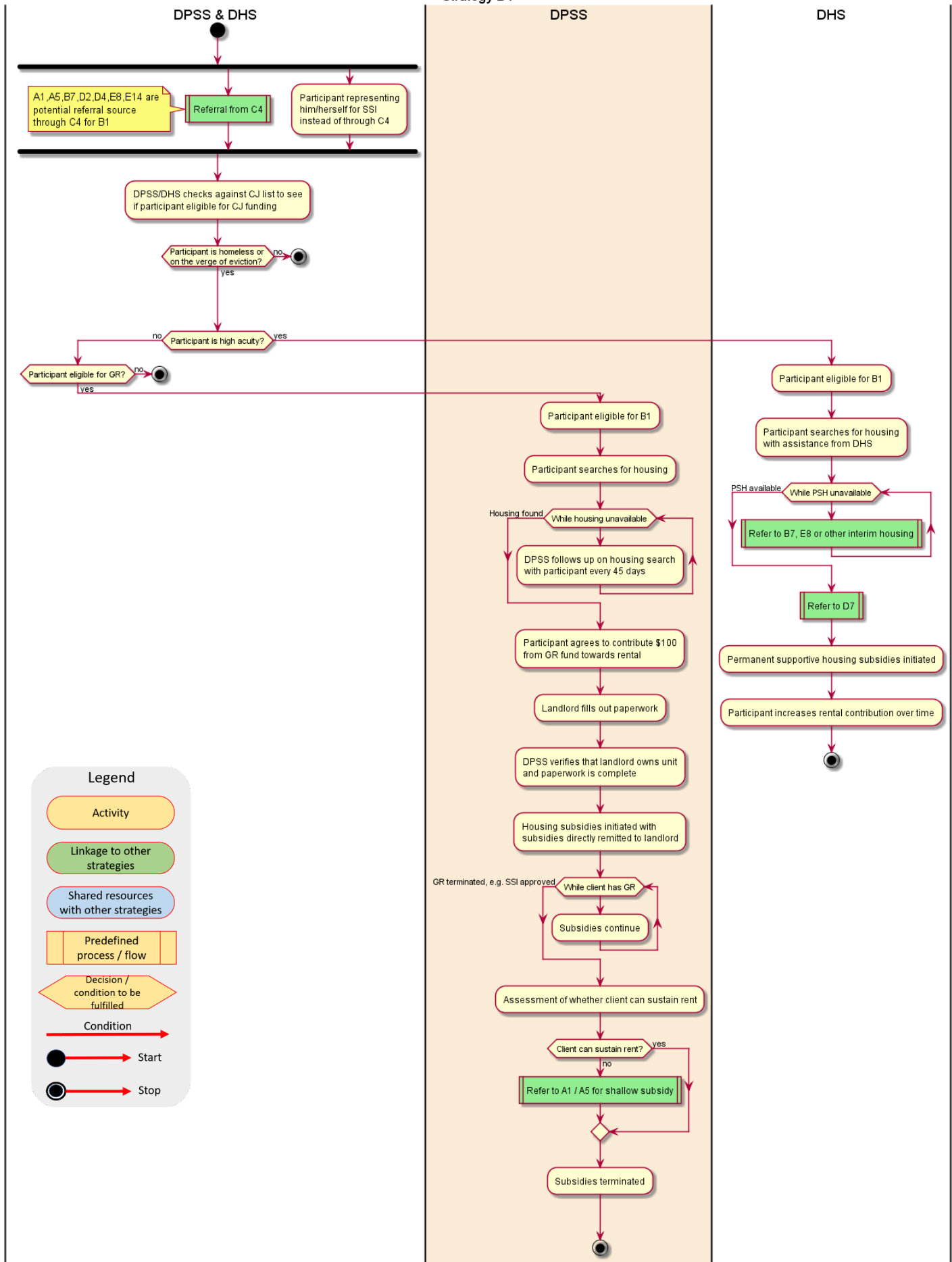
⇒ **LINKAGE FROM:** Clients are referred or handed off to this strategy from the other strategy.

↔ **RECIPROCAL LINKAGE:** This strategy can be both source or destination of client referrals or hand-offs to/from the other strategy.

☑ **SUPPORTS:** Strategy facilitates referrals or hand-offs from/to the other strategy, or provides resources (e.g., staff or case management) for its functions.

☑ **SUPPORTED BY:** The other strategy facilitates referrals or hand-offs from/to this strategy, or provides resources (e.g., staff or case management) for its functions

Strategy B1



Strategy B3 – Partner with Cities to Expand Rapid Re-Housing

- ⇒ LINKAGE FROM A1
- ⇒ LINKAGE FROM A5
- ⇒ LINKAGE FROM B6 (*if ineligible for B6*)
- ⇒ LINKAGE FROM C4-C6 (*if client not enrolling in BEST*)
- ⇒ LINKAGE FROM D2
- ⇒ LINKAGE FROM D4
- ⇒ LINKAGE FROM E6
- ⇐ LINKAGE TO B4 (*Participants with HUD CoC and ESG RRH access to landlord incentive funds that are provided to the PHAs and through City/County RRH programs*)
- ⇐ LINKAGE TO C2
- ⇐ LINKAGE TO C4-C6
- ⇐ LINKAGE TO C7
- ⇐ LINKAGE TO D6
- ⇐ LINKAGE TO D7 (*if client ends up to be high acuity*)
- ↔ RECIPROCAL LINKAGE WITH B7
- ↔ RECIPROCAL LINKAGE WITH E8

- ☑ SUPPORTED BY E7
- ☑ SUPPORTED BY E14
- ☑ SUPPORTED BY F7

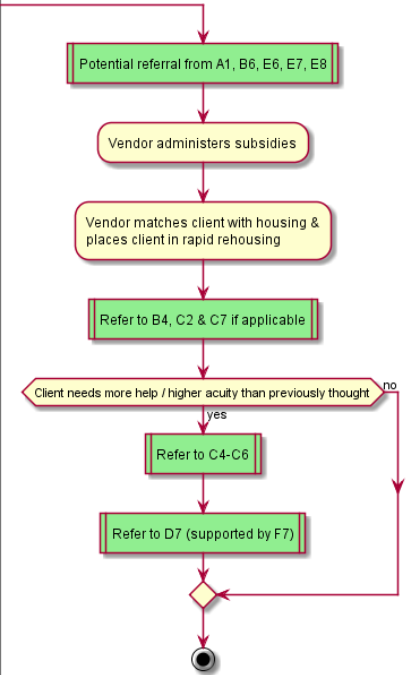
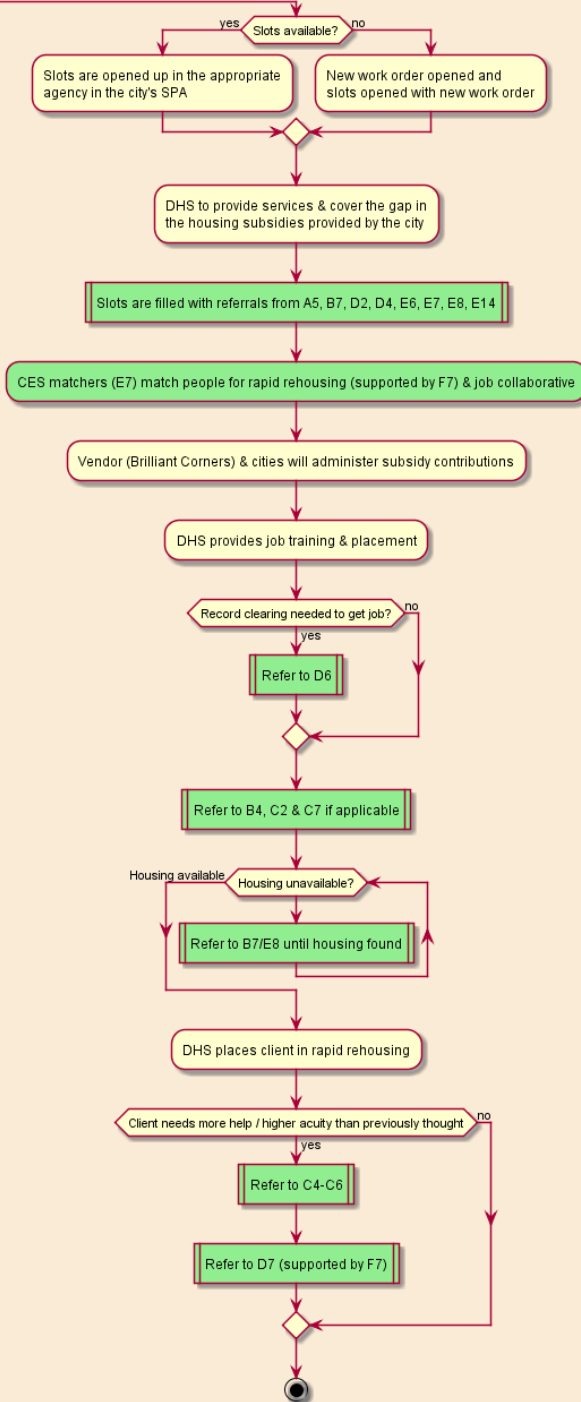
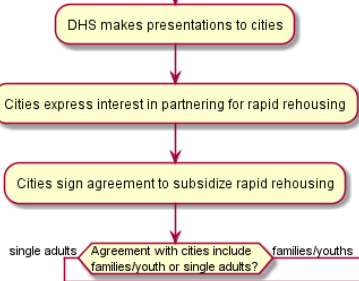
DEFINITIONS

- ⇐ **LINKAGE TO:** This strategy refers or hands off clients to the other strategy.
- ⇒ **LINKAGE FROM:** Clients are referred or handed off to this strategy from the other strategy.
- ↔ **RECIPROCAL LINKAGE:** This strategy can be both source or destination of client referrals or hand-offs to/from the other strategy.
- ☑ **SUPPORTS:** Strategy facilitates referrals or hand-offs from/to the other strategy, or provides resources (e.g., staff or case management) for its functions.
- ☑ **SUPPORTED BY:** The other strategy facilitates referrals or hand-offs from/to this strategy, or provides resources (e.g., staff or case management) for its functions

Strategy B3 DHS

LAHSA & DHS

LAHSA



Legend

Activity

Linkage to other strategies

Shared resources with other strategies

Predefined process / flow

Decision / condition to be fulfilled

Condition

Start

Stop

Strategy B4 – Facilitate Utilization of Federal Housing Subsidies

⇒ LINKAGE FROM B3

⇒ LINKAGE FROM E6

☑ SUPPORTED BY E7

☑ SUPPORTED BY E14

DEFINITIONS

⇐ **LINKAGE TO:** This strategy refers or hands off clients to the other strategy.

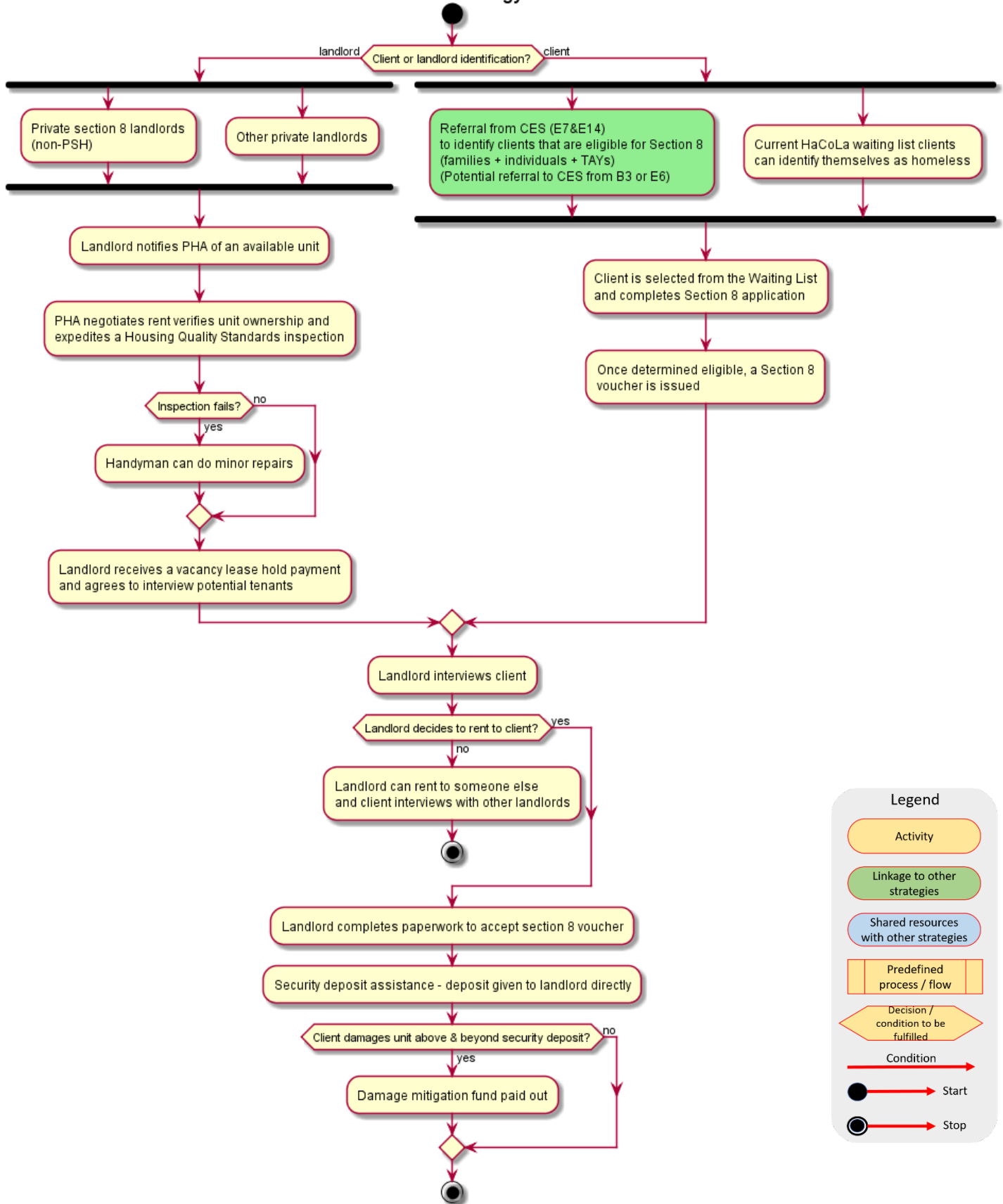
⇒ **LINKAGE FROM:** Clients are referred or handed off to this strategy from the other strategy.

↔ **RECIPROCAL LINKAGE:** This strategy can be both source or destination of client referrals or hand-offs to/from the other strategy.

☑ **SUPPORTS:** Strategy facilitates referrals or hand-offs from/to the other strategy, or provides resources (e.g., staff or case management) for its functions.

☑ **SUPPORTED BY:** The other strategy facilitates referrals or hand-offs from/to this strategy, or provides resources (e.g., staff or case management) for its functions

Strategy B4



Strategy B6 – Family Reunification Housing Subsidies

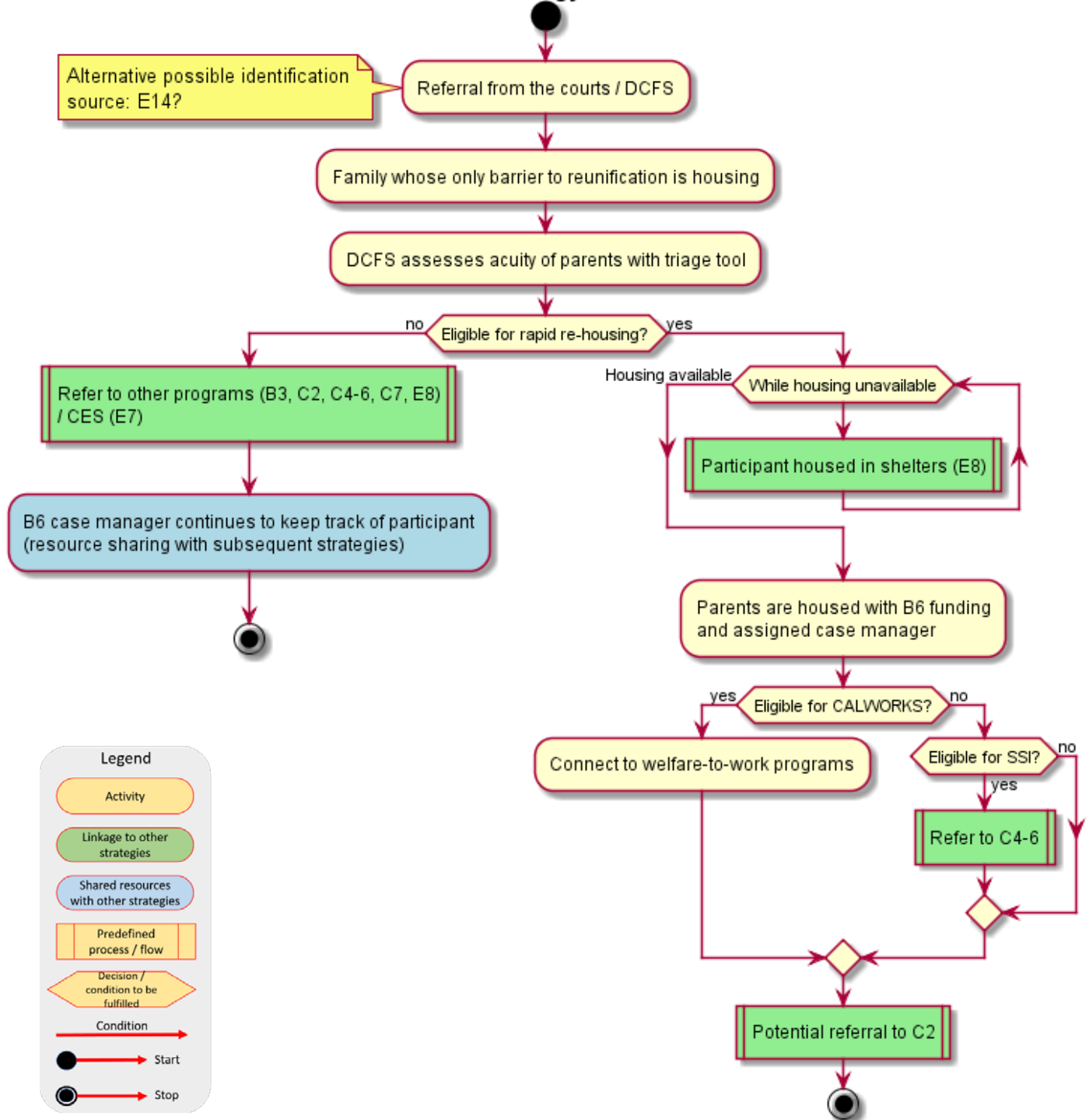
- ↔ LINKAGE TO B3 (*if ineligible for B6*)
- ↔ LINKAGE TO C2
- ↔ LINKAGE TO C4-C6
- ↔ LINKAGE TO C7 (*if ineligible for B6*)
- ↔ LINKAGE TO E8

- ☑ SUPPORTED BY E7
- ☑ SUPPORTED BY E14

DEFINITIONS

- ↔ **LINKAGE TO:** This strategy refers or hands off clients to the other strategy.
- ➡ **LINKAGE FROM:** Clients are referred or handed off to this strategy from the other strategy.
- ↔ **RECIPROCAL LINKAGE:** This strategy can be both source or destination of client referrals or hand-offs to/from the other strategy.
- ☑ **SUPPORTS:** Strategy facilitates referrals or hand-offs from/to the other strategy, or provides resources (e.g., staff or case management) for its functions.
- ☑ **SUPPORTED BY:** The other strategy facilitates referrals or hand-offs from/to this strategy, or provides resources (e.g., staff or case management) for its functions

Strategy B6



Strategy B7 – Interim/Bridge Housing for Those Exiting Institutions

- ⇒ LINKAGE FROM B1
- ⇒ LINKAGE FROM D2
- ⇒ LINKAGE FROM E6

- ⇐ LINKAGE TO A1 (*when client can be diverted or shelter is not needed*)
- ⇐ LINKAGE TO A5 (*when client can be diverted or shelter is not needed*)
- ⇐ LINKAGE TO C2
- ⇐ LINKAGE TO C7
- ⇐ LINKAGE TO D7

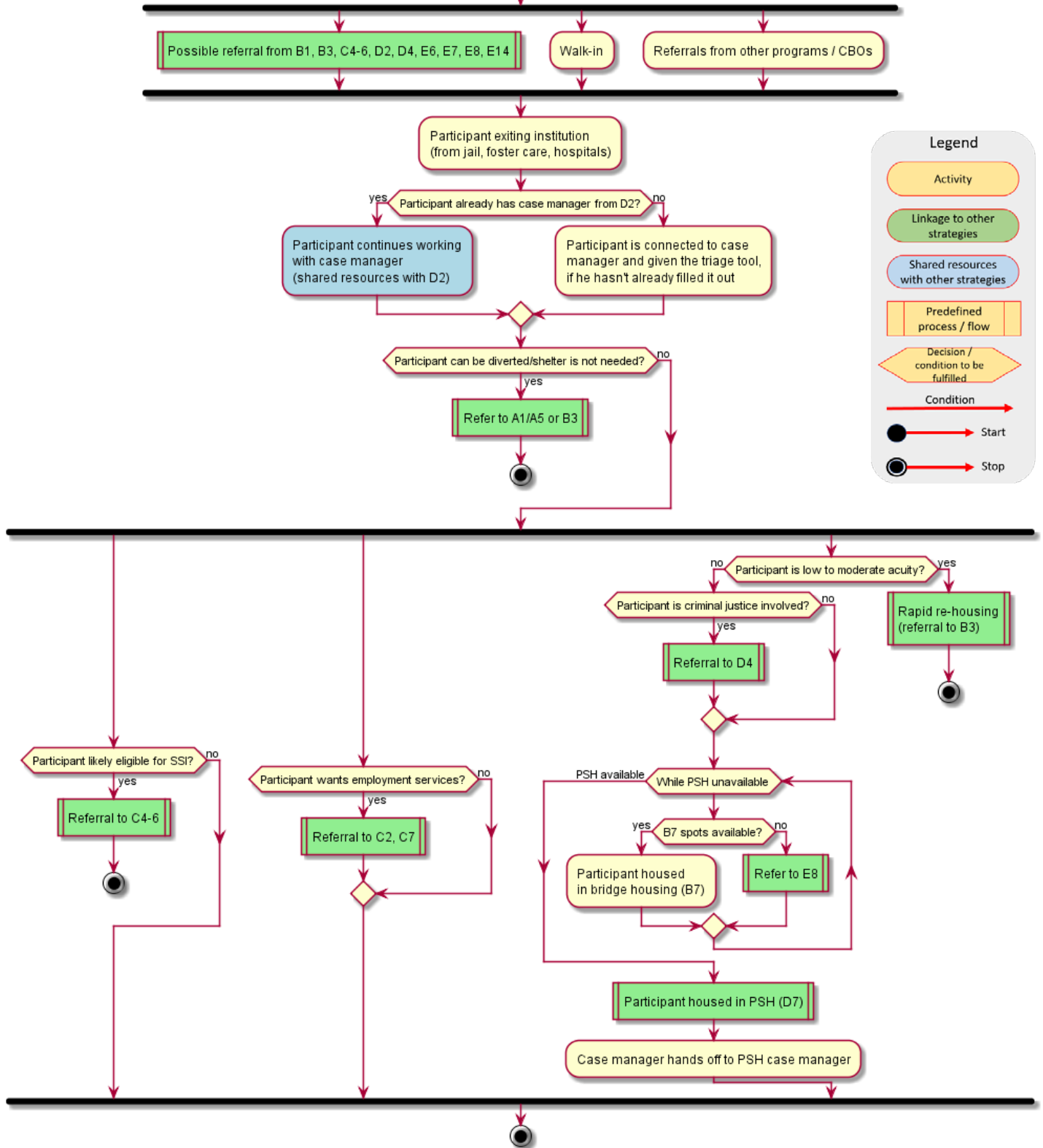
- ↔ RECIPROCAL LINKAGE WITH B3
- ↔ RECIPROCAL LINKAGE WITH E8
- ↔ RECIPROCAL LINKAGE WITH C4-C6 (*C6 only*)
- ↔ RECIPROCAL LINKAGE WITH D4

- ☑ SUPPORTED BY E7
- ☑ SUPPORTED BY E14

DEFINITIONS

- ⇐ **LINKAGE TO:** This strategy refers or hands off clients to the other strategy.
- ⇒ **LINKAGE FROM:** Clients are referred or handed off to this strategy from the other strategy.
- ↔ **RECIPROCAL LINKAGE:** This strategy can be both source or destination of client referrals or hand-offs to/from the other strategy.
- ☑ **SUPPORTS:** Strategy facilitates referrals or hand-offs from/to the other strategy, or provides resources (e.g., staff or case management) for its functions.
- ☑ **SUPPORTED BY:** The other strategy facilitates referrals or hand-offs from/to this strategy, or provides resources (e.g., staff or case management) for its functions

Strategy B7



Strategy C2 – Increase Employment for Homeless Adults by Supporting Social Enterprise

- ⇒ LINKAGE FROM A1
- ⇒ LINKAGE FROM A5
- ⇒ LINKAGE FROM B3
- ⇒ LINKAGE FROM B6
- ⇒ LINKAGE FROM B7
- ⇒ LINKAGE FROM C4-C6
- ⇒ LINKAGE FROM D2
- ⇒ LINKAGE FROM D4
- ⇒ LINKAGE FROM D6
- ⇒ LINKAGE FROM D7
- ⇒ LINKAGE FROM E6
- ⇒ LINKAGE FROM E8

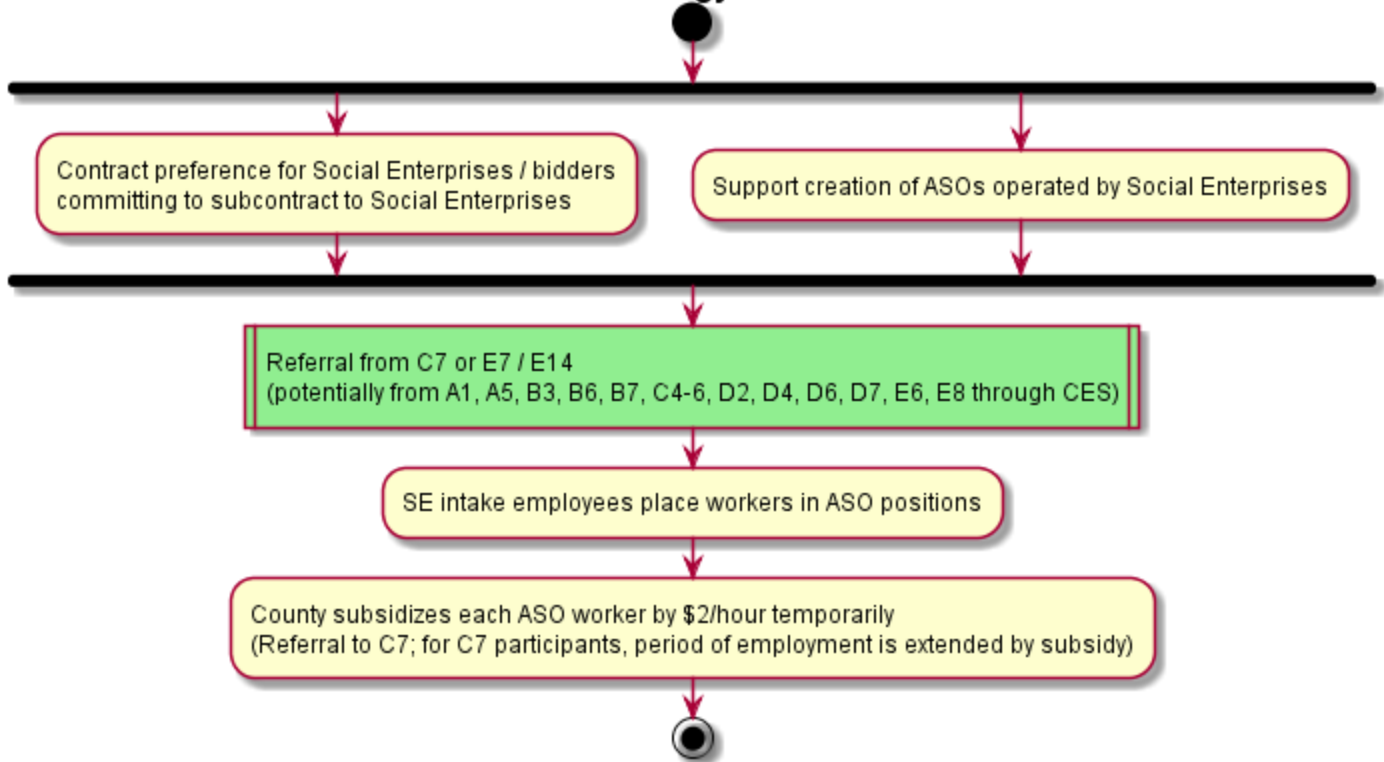
- ↔ RECIPROCAL LINKAGE WITH C7

- ☑ SUPPORTED BY E7
- ☑ SUPPORTED BY E14

DEFINITIONS

- ⇐ **LINKAGE TO:** This strategy refers or hands off clients to the other strategy.
- ⇒ **LINKAGE FROM:** Clients are referred or handed off to this strategy from the other strategy.
- ↔ **RECIPROCAL LINKAGE:** This strategy can be both source or destination of client referrals or hand-offs to/from the other strategy.
- ☑ **SUPPORTS:** Strategy facilitates referrals or hand-offs from/to the other strategy, or provides resources (e.g., staff or case management) for its functions.
- ☑ **SUPPORTED BY:** The other strategy facilitates referrals or hand-offs from/to this strategy, or provides resources (e.g., staff or case management) for its functions

Strategy C2



Legend

Activity

Linkage to other strategies

Shared resources with other strategies

Predefined process / flow

Decision / condition to be fulfilled

Condition

Start

Stop

Strategies C4-C6 – Countywide SSI/Veteran’s Benefits Advocacy Programs

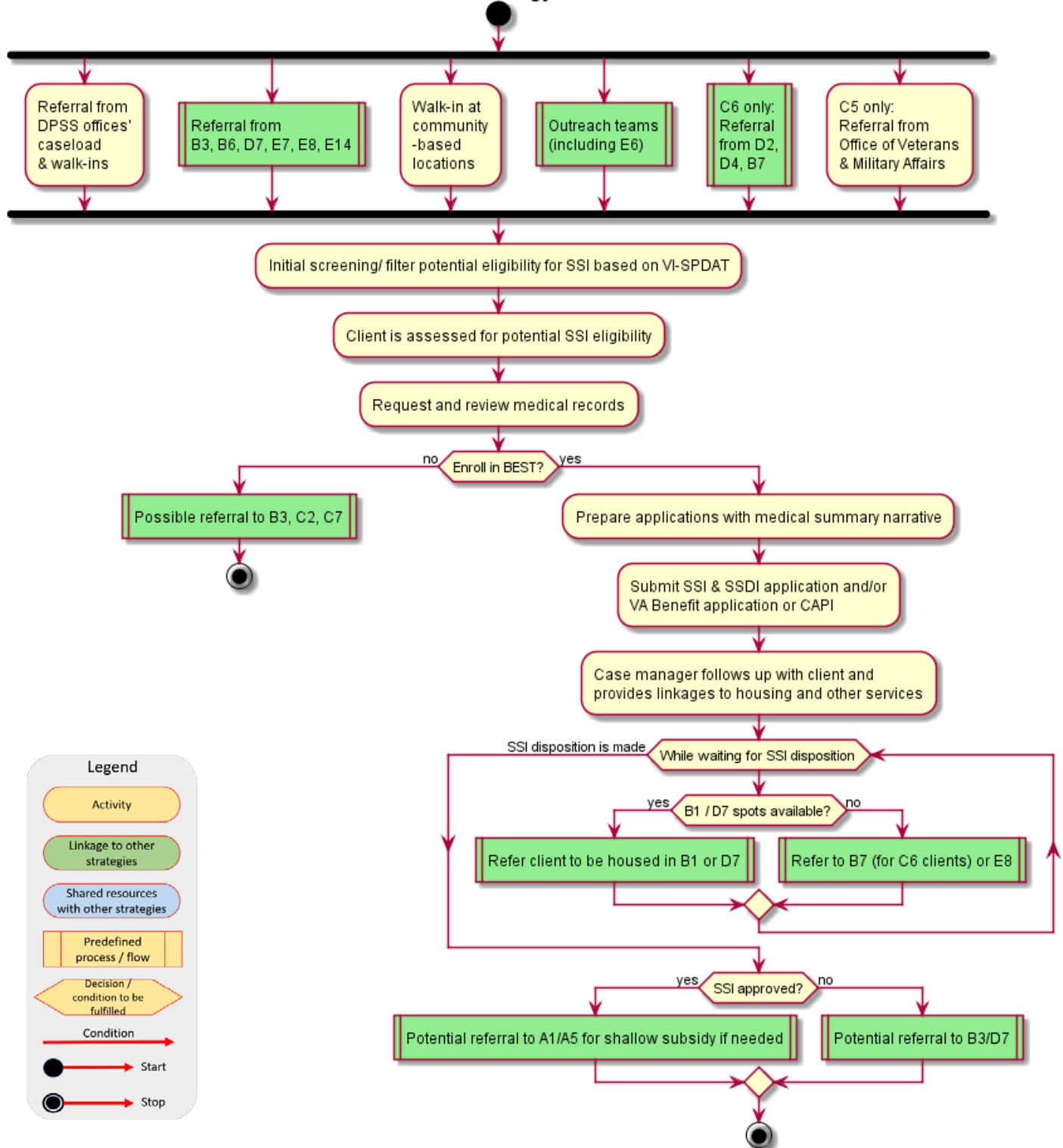
- ⇒ LINKAGE FROM A1 (*if client is ineligible for strategy A1*)
- ⇒ LINKAGE FROM A5 (*if client is ineligible for strategy A5*)
- ⇒ LINKAGE FROM B3
- ⇒ LINKAGE FROM B6
- ⇒ LINKAGE FROM D2 (C6 ONLY)
- ⇒ LINKAGE FROM D4 (C6 ONLY)
- ⇒ LINKAGE FROM E6
- ⇐ LINKAGE TO A1 (*if shallow subsidy is needed after SSI approval*)
- ⇐ LINKAGE TO A5 (*if shallow subsidy is needed after SSI approval*)
- ⇐ LINKAGE TO B1
- ⇐ LINKAGE TO B3 (*if client not enrolling in BEST*)
- ⇐ LINKAGE TO C2
- ⇐ LINKAGE TO C7 (*if ineligible for SSI*)
- ↔ RECIPROCAL LINKAGE WITH B7 (*C6 only*)
- ↔ RECIPROCAL LINKAGE WITH D7
- ↔ RECIPROCAL LINKAGE WITH E8

- ☑ SUPPORTED BY E7
- ☑ SUPPORTED BY E14

DEFINITIONS

- ⇐ **LINKAGE TO:** This strategy refers or hands off clients to the other strategy.
- ⇒ **LINKAGE FROM:** Clients are referred or handed off to this strategy from the other strategy.
- ↔ **RECIPROCAL LINKAGE:** This strategy can be both source or destination of client referrals or hand-offs to/from the other strategy.
- ☑ **SUPPORTS:** Strategy facilitates referrals or hand-offs from/to the other strategy, or provides resources (e.g., staff or case management) for its functions.
- ☑ **SUPPORTED BY:** The other strategy facilitates referrals or hand-offs from/to this strategy, or provides resources (e.g., staff or case management) for its functions

Strategy C4-6



Strategy C7 – Subsidized Employment for Homeless Adults

- ⇒ LINKAGE FROM A5
- ⇒ LINKAGE FROM B3
- ⇒ LINKAGE FROM B6 (*if ineligible for B6*)
- ⇒ LINKAGE FROM B7
- ⇒ LINKAGE FROM C4-6
- ⇒ LINKAGE FROM D2
- ⇒ LINKAGE FROM D4
- ⇒ LINKAGE FROM D6
- ⇒ LINKAGE FROM D7
- ⇒ LINKAGE FROM E6
- ⇒ LINKAGE FROM E8

⇐ LINKAGE TO C4-6 (*if ineligible for GR*)

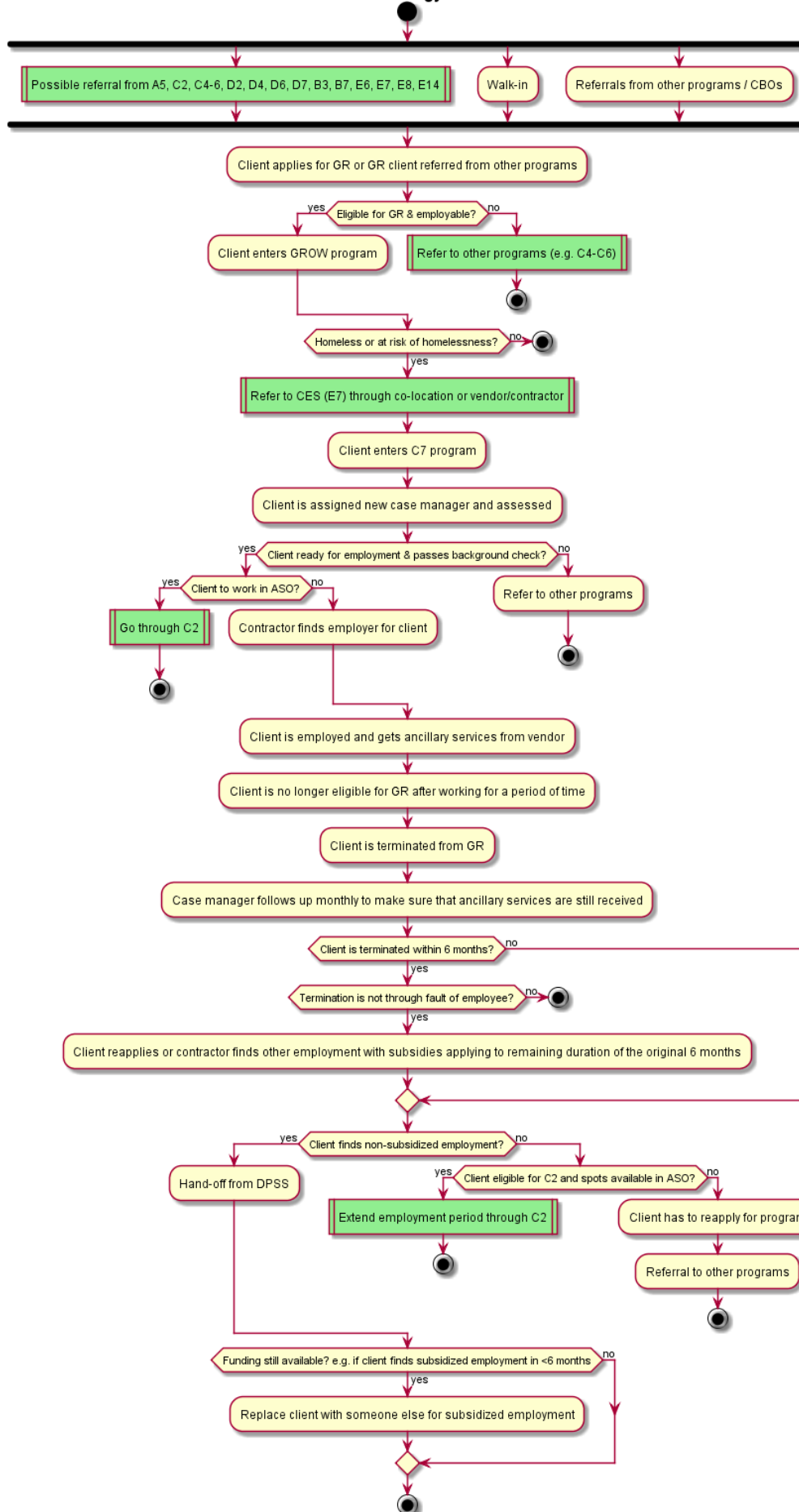
↔ RECIPROCAL LINKAGE WITH C2

- ☑ SUPPORTED BY E7
- ☑ SUPPORTED BY E14

DEFINITIONS

- ⇐ **LINKAGE TO:** This strategy refers or hands off clients to the other strategy.
- ⇒ **LINKAGE FROM:** Clients are referred or handed off to this strategy from the other strategy.
- ↔ **RECIPROCAL LINKAGE:** This strategy can be both source or destination of client referrals or hand-offs to/from the other strategy.
- ☑ **SUPPORTS:** Strategy facilitates referrals or hand-offs from/to the other strategy, or provides resources (e.g., staff or case management) for its functions.
- ☑ **SUPPORTED BY:** The other strategy facilitates referrals or hand-offs from/to this strategy, or provides resources (e.g., staff or case management) for its functions

Strategy C7



Legend

Activity

Linkage to other strategies

Shared resources with other strategies

Predefined process / flow

Decision / condition to be fulfilled

Condition

Start

Stop

Strategy D2 – Jail In-Reach

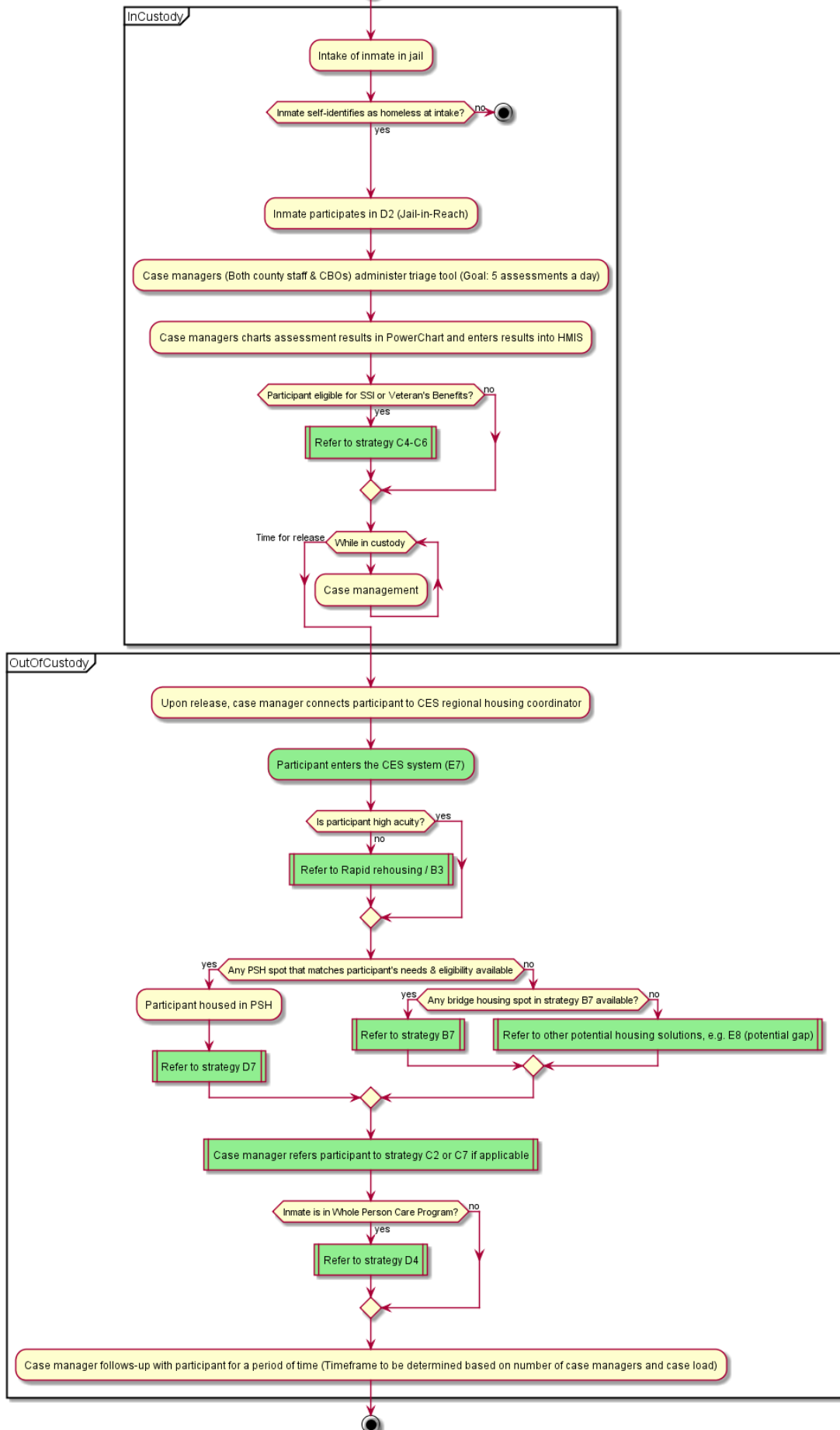
- ↔ LINKAGE TO B3
- ↔ LINKAGE TO B7
- ↔ LINKAGE TO C2
- ↔ LINKAGE TO C4-C6
- ↔ LINKAGE TO C7
- ↔ LINKAGE TO D4
- ↔ LINKAGE TO D7
- ↔ LINKAGE TO E8

- ☑ SUPPORTED BY E7
- ☑ SUPPORTED BY E14

DEFINITIONS

- ↔ **LINKAGE TO:** This strategy refers or hands off clients to the other strategy.
- ➡ **LINKAGE FROM:** Clients are referred or handed off to this strategy from the other strategy.
- ↔ **RECIPROCAL LINKAGE:** This strategy can be both source or destination of client referrals or hand-offs to/from the other strategy.
- ☑ **SUPPORTS:** Strategy facilitates referrals or hand-offs from/to the other strategy, or provides resources (e.g., staff or case management) for its functions.
- ☑ **SUPPORTED BY:** The other strategy facilitates referrals or hand-offs from/to this strategy, or provides resources (e.g., staff or case management) for its functions

Strategy D2



Legend

Activity

Linkage to other strategies

Shared resources with other strategies

Predefined process / flow

Decision / condition to be fulfilled

Condition

Start

Stop

Strategy D4 – Regional Integrated Re-Entry Network

⇒ LINKAGE FROM D2

⇒ LINKAGE FROM E6

⇐ LINKAGE TO B1

⇐ LINKAGE TO B3

⇐ LINKAGE TO C2

⇐ LINKAGE TO C4-C6

⇐ LINKAGE TO C7

⇐ LINKAGE TO D6

⇐ LINKAGE TO D7

↔ RECIPROCAL LINKAGE WITH B7

↔ RECIPROCAL LINKAGE WITH E8

☑ SUPPORTED BY E7

☑ SUPPORTED BY E14

☑ SUPPORTED BY F7

DEFINITIONS

⇐ **LINKAGE TO:** This strategy refers or hands off clients to the other strategy.

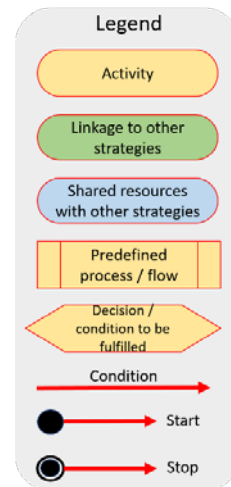
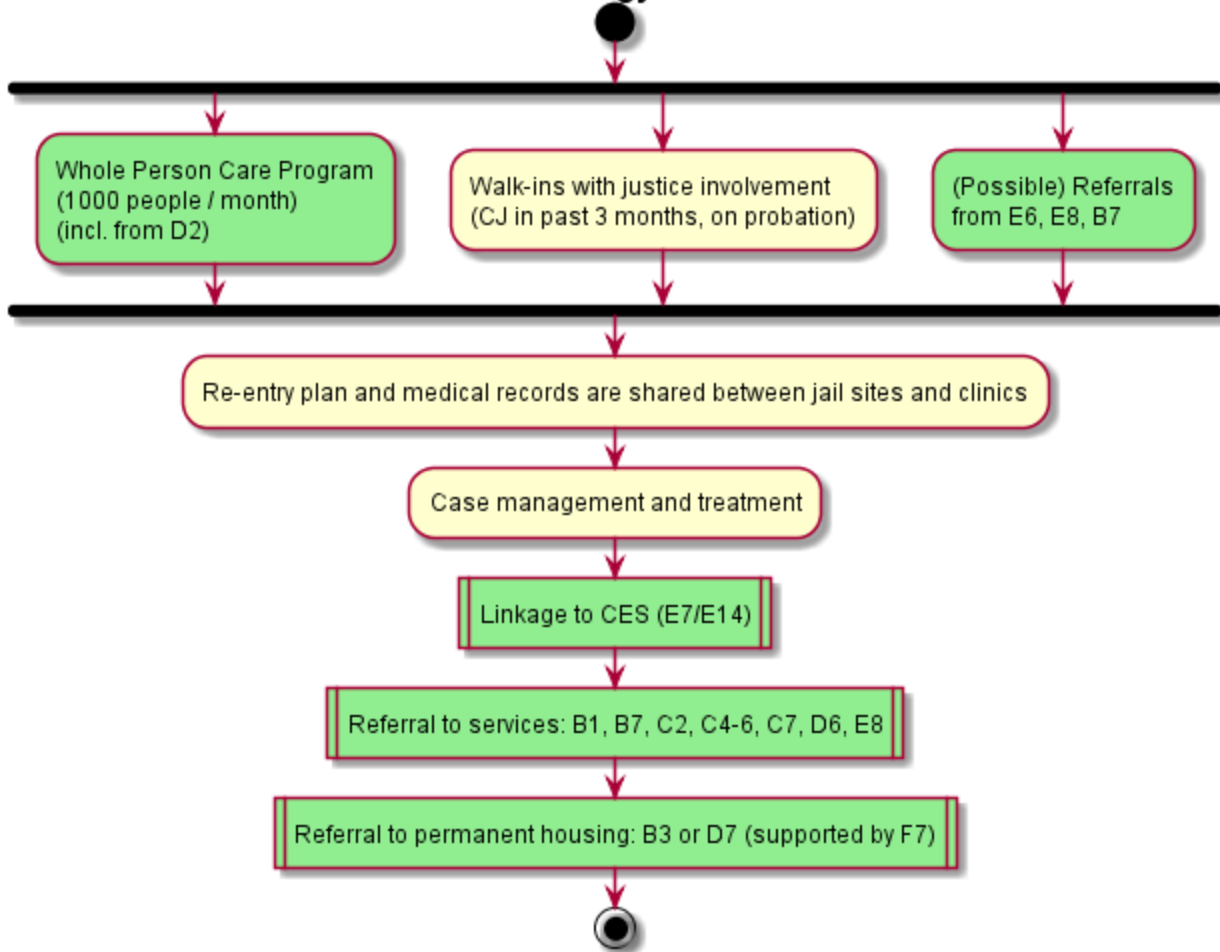
⇒ **LINKAGE FROM:** Clients are referred or handed off to this strategy from the other strategy.

↔ **RECIPROCAL LINKAGE:** This strategy can be both source or destination of client referrals or hand-offs to/from the other strategy.

☑ **SUPPORTS:** Strategy facilitates referrals or hand-offs from/to the other strategy, or provides resources (e.g., staff or case management) for its functions.

☑ **SUPPORTED BY:** The other strategy facilitates referrals or hand-offs from/to this strategy, or provides resources (e.g., staff or case management) for its functions

Strategy D4



Strategy D6 – Criminal Record Clearing Project

- ⇒ LINKAGE FROM B3
- ⇒ LINKAGE FROM D4
- ⇒ LINKAGE FROM E6

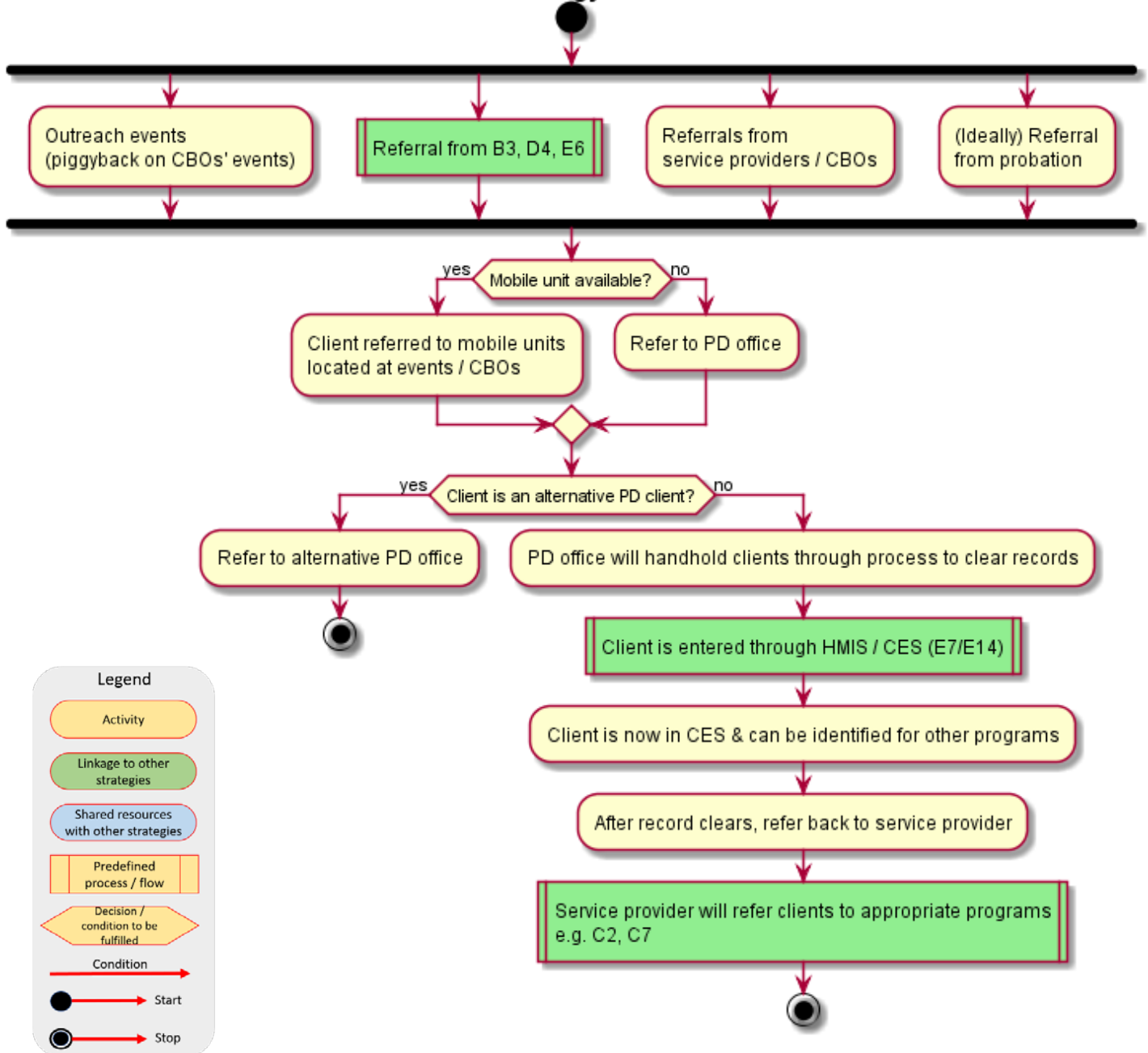
- ⇐ LINKAGE TO C2
- ⇐ LINKAGE TO C7

- ☑ SUPPORTED BY E7
- ☑ SUPPORTED BY E14

DEFINITIONS

- ⇐ **LINKAGE TO:** This strategy refers or hands off clients to the other strategy.
- ⇒ **LINKAGE FROM:** Clients are referred or handed off to this strategy from the other strategy.
- ↔ **RECIPROCAL LINKAGE:** This strategy can be both source or destination of client referrals or hand-offs to/from the other strategy.
- ☑ **SUPPORTS:** Strategy facilitates referrals or hand-offs from/to the other strategy, or provides resources (e.g., staff or case management) for its functions.
- ☑ **SUPPORTED BY:** The other strategy facilitates referrals or hand-offs from/to this strategy, or provides resources (e.g., staff or case management) for its functions

Strategy D6



Strategy D7 – Provide Services and Rental Subsidies for Permanent Supportive Housing

- ⇒ LINKAGE FROM B1
- ⇒ LINKAGE FROM B3 (*if B3 client ends up to be high acuity*)
- ⇒ LINKAGE FROM B7
- ⇒ LINKAGE FROM D2
- ⇒ LINKAGE FROM D4
- ⇒ LINKAGE FROM E6
- ⇒ LINKAGE FROM E8

- ⇐ LINKAGE TO C2
- ⇐ LINKAGE TO C7

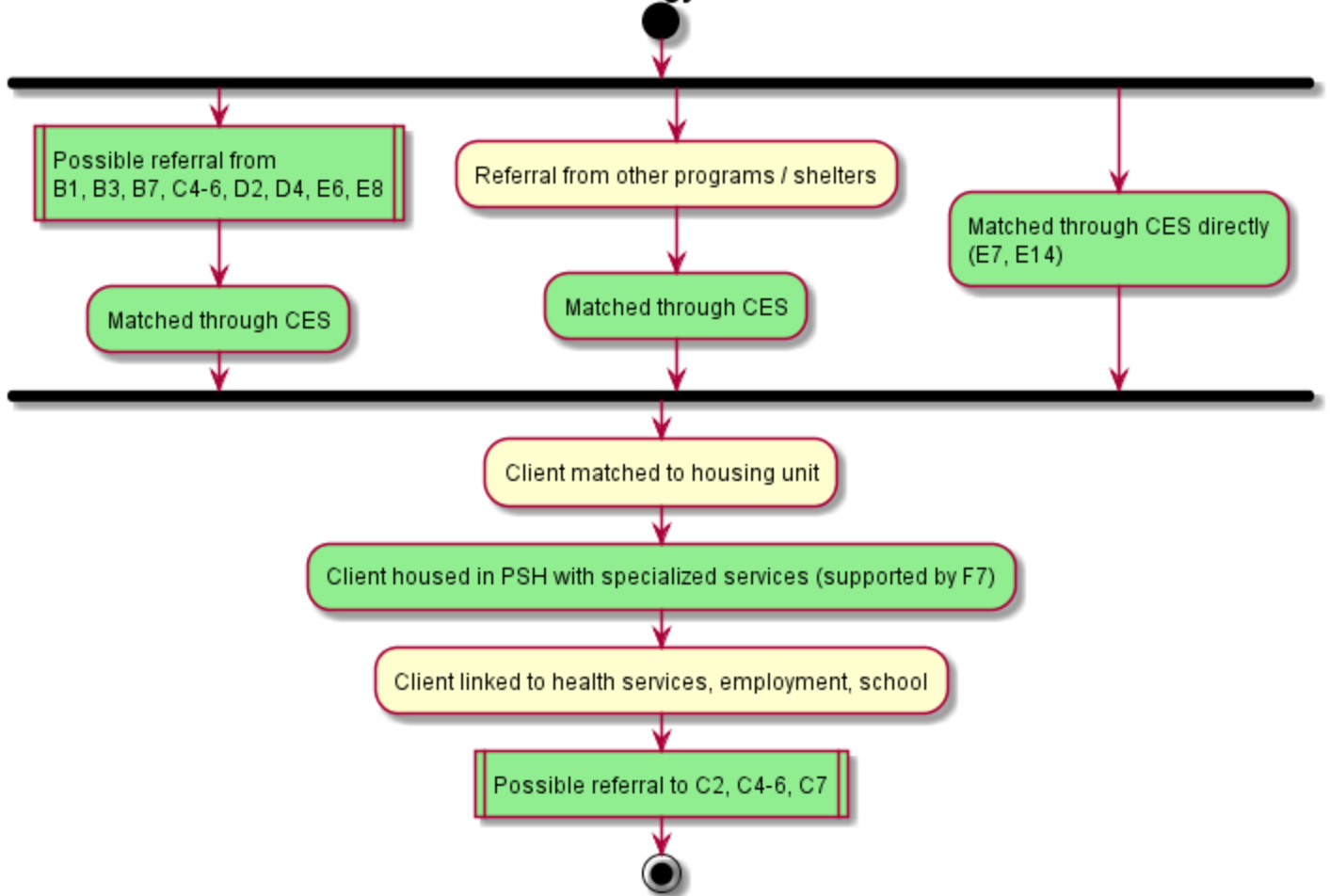
↔ RECIPROCAL LINKAGE WITH C4-C6

- ☑ SUPPORTED BY E7
- ☑ SUPPORTED BY E14
- ☑ SUPPORTED BY F7

DEFINITIONS

- ⇐ **LINKAGE TO:** This strategy refers or hands off clients to the other strategy.
- ⇒ **LINKAGE FROM:** Clients are referred or handed off to this strategy from the other strategy.
- ↔ **RECIPROCAL LINKAGE:** This strategy can be both source or destination of client referrals or hand-offs to/from the other strategy.
- ☑ **SUPPORTS:** Strategy facilitates referrals or hand-offs from/to the other strategy, or provides resources (e.g., staff or case management) for its functions.
- ☑ **SUPPORTED BY:** The other strategy facilitates referrals or hand-offs from/to this strategy, or provides resources (e.g., staff or case management) for its functions

Strategy D7



Legend

Activity

Linkage to other strategies

Shared resources with other strategies

Predefined process / flow

Decision / condition to be fulfilled

Condition

Start

Stop

Strategy E6 – Countywide Outreach System

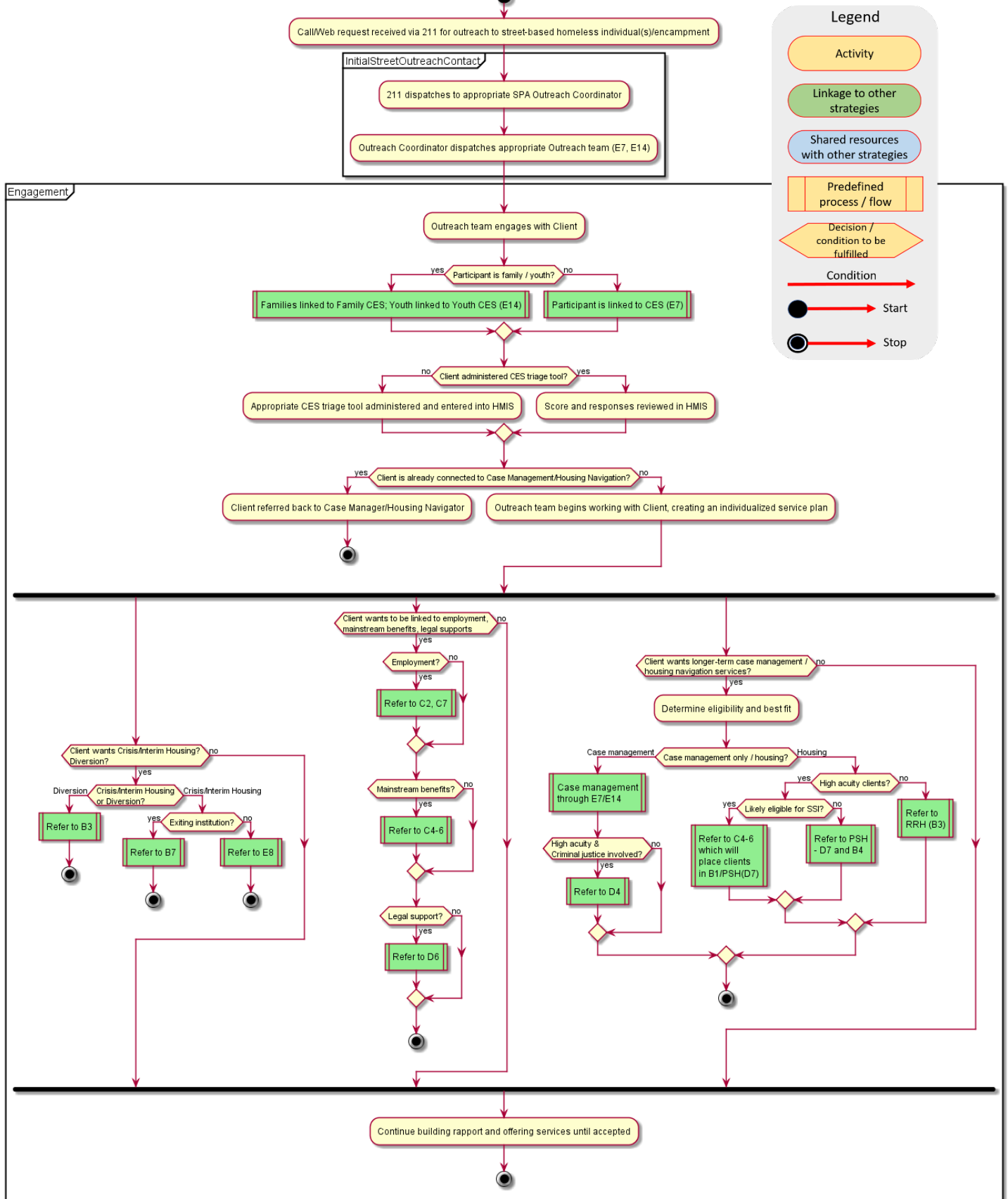
- ↔ LINKAGE TO B3
- ↔ LINKAGE TO B4
- ↔ LINKAGE TO B7
- ↔ LINKAGE TO C2
- ↔ LINKAGE TO C4-C6
- ↔ LINKAGE TO C7
- ↔ LINKAGE TO D4
- ↔ LINKAGE TO D6
- ↔ LINKAGE TO D7
- ↔ LINKAGE TO E8

- ☑ SUPPORTED BY E7
- ☑ SUPPORTED BY E14

DEFINITIONS

- ↔ **LINKAGE TO:** This strategy refers or hands off clients to the other strategy.
- ➡ **LINKAGE FROM:** Clients are referred or handed off to this strategy from the other strategy.
- ↔ **RECIPROCAL LINKAGE:** This strategy can be both source or destination of client referrals or hand-offs to/from the other strategy.
- ☑ **SUPPORTS:** Strategy facilitates referrals or hand-offs from/to the other strategy, or provides resources (e.g., staff or case management) for its functions.
- ☑ **SUPPORTED BY:** The other strategy facilitates referrals or hand-offs from/to this strategy, or provides resources (e.g., staff or case management) for its functions

Strategy E6



Strategy E7 – Strengthen the Coordinated Entry System (CES)

- ☑ SUPPORTS A1
- ☑ SUPPORTS A5
- ☑ SUPPORTS B1
- ☑ SUPPORTS B3
- ☑ SUPPORTS B4
- ☑ SUPPORTS B6
- ☑ SUPPORTS B7
- ☑ SUPPORTS C4-C6
- ☑ SUPPORTS C7
- ☑ SUPPORTS D2
- ☑ SUPPORTS D4
- ☑ SUPPORTS D6
- ☑ SUPPORTS D7
- ☑ SUPPORTS E6
- ☑ SUPPORTS E8

DEFINITIONS

- ↔ **LINKAGE TO:** This strategy refers or hands off clients to the other strategy.
- ➡ **LINKAGE FROM:** Clients are referred or handed off to this strategy from the other strategy.
- ↔ **RECIPROCAL LINKAGE:** This strategy can be both source or destination of client referrals or hand-offs to/from the other strategy.
- ☑ **SUPPORTS:** Strategy facilitates referrals or hand-offs from/to the other strategy, or provides resources (e.g., staff or case management) for its functions.
- ☑ **SUPPORTED BY:** The other strategy facilitates referrals or hand-offs from/to this strategy, or provides resources (e.g., staff or case management) for its functions

Strategy E8 – Enhance the Emergency Shelter System

- ⇒ LINKAGE FROM A1 (*if client referred to B3, while housing slots unavailable*)
- ⇒ LINKAGE FROM A5 (*if client referred to B3, while housing slots unavailable*)
- ⇒ LINKAGE FROM B1
- ⇒ LINKAGE FROM B6
- ⇒ LINKAGE FROM D2
- ⇒ LINKAGE FROM E6

- ⇐ LINKAGE TO A1 (*if client can be diverted/shelter is not needed*)
- ⇐ LINKAGE TO A5 (*if client can be diverted/shelter is not needed*)
- ⇐ LINKAGE TO C2
- ⇐ LINKAGE TO C7
- ⇐ LINKAGE TO D7

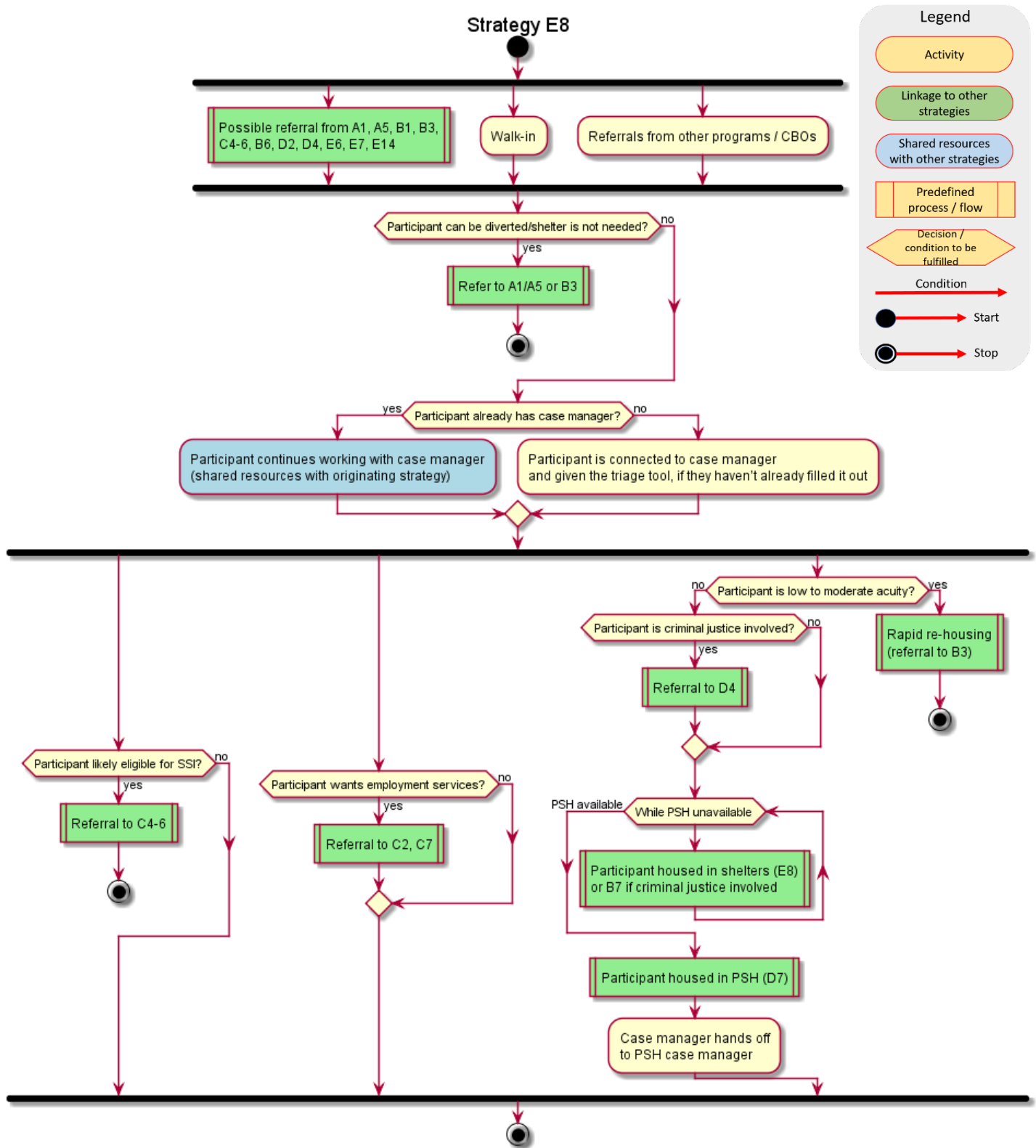
- ↔ RECIPROCAL LINKAGE WITH B3
- ↔ RECIPROCAL LINKAGE WITH B7
- ↔ RECIPROCAL LINKAGE WITH C4-C6
- ↔ RECIPROCAL LINKAGE WITH D4

- ☑ SUPPORTED BY E7
- ☑ SUPPORTED BY E14

DEFINITIONS

- ⇐ **LINKAGE TO:** This strategy refers or hands off clients to the other strategy.
- ⇒ **LINKAGE FROM:** Clients are referred or handed off to this strategy from the other strategy.
- ↔ **RECIPROCAL LINKAGE:** This strategy can be both source or destination of client referrals or hand-offs to/from the other strategy.
- ☑ **SUPPORTS:** Strategy facilitates referrals or hand-offs from/to the other strategy, or provides resources (e.g., staff or case management) for its functions.
- ☑ **SUPPORTED BY:** The other strategy facilitates referrals or hand-offs from/to this strategy, or provides resources (e.g., staff or case management) for its functions

Strategy E8



Strategy E14 – Enhanced Services for Transition Age Youth (TAY)

- ☑ SUPPORTS A1
- ☑ SUPPORTS A5
- ☑ SUPPORTS B1
- ☑ SUPPORTS B3
- ☑ SUPPORTS B4
- ☑ SUPPORTS B6
- ☑ SUPPORTS B7
- ☑ SUPPORTS C2
- ☑ SUPPORTS C4-C6
- ☑ SUPPORTS C7
- ☑ SUPPORTS D2
- ☑ SUPPORTS D4
- ☑ SUPPORTS D6
- ☑ SUPPORTS D7
- ☑ SUPPORTS E6
- ☑ SUPPORTS E8

DEFINITIONS

- ↔ **LINKAGE TO:** This strategy refers or hands off clients to the other strategy.
- ➡ **LINKAGE FROM:** Clients are referred or handed off to this strategy from the other strategy.
- ↔ **RECIPROCAL LINKAGE:** This strategy can be both source or destination of client referrals or hand-offs to/from the other strategy.
- ☑ **SUPPORTS:** Strategy facilitates referrals or hand-offs from/to the other strategy, or provides resources (e.g., staff or case management) for its functions.
- ☑ **SUPPORTED BY:** The other strategy facilitates referrals or hand-offs from/to this strategy, or provides resources (e.g., staff or case management) for its functions

Strategy F7 – Preserve Current Affordable Housing and Promote the Development of Affordable Housing for Homeless Families and Individuals

- ☑ SUPPORTS B3
- ☑ SUPPORTS D4
- ☑ SUPPORTS D7

DEFINITIONS

- ↔ **LINKAGE TO:** This strategy refers or hands off clients to the other strategy.
- ⇒ **LINKAGE FROM:** Clients are referred or handed off to this strategy from the other strategy.
- ↔ **RECIPROCAL LINKAGE:** This strategy can be both source or destination of client referrals or hand-offs to/from the other strategy.
- ☑ **SUPPORTS:** Strategy facilitates referrals or hand-offs from/to the other strategy, or provides resources (e.g., staff or case management) for its functions.
- ☑ **SUPPORTED BY:** The other strategy facilitates referrals or hand-offs from/to this strategy, or provides resources (e.g., staff or case management) for its functions