

Skid Row Community Infrastructure

- Hygiene
- Health / Clinic
- Food Access
- Park / Garden
- Affordable / Supportive Housing
- Legal Services
- Housing / Social Services
- Arts, Culture & Community Organizing
- Proposed Luxury Development



Downtown Women's Center (DWC)
 In 1978 the DWC opened to provide a safe space for women experiencing homelessness. The heart of DWC is its Day Center, where women can receive free meals, access to toilets, showers and laundry. Today, DWC also provides a health clinic dedicated exclusively to serving women, permanent supportive housing, and social enterprise providing employment readiness and opportunities. DWC also leads the Every Woman Housed Initiative.

JWCH Institute, Inc. (JWCH)
 JWCH is a Federally Qualified Health Center (FQHC) whose mission is to improve the health status and well-being of underserved segments of the population of Los Angeles County through the direct provision or coordination of health care, health education, services, and research. JWCH provides comprehensive and integrated care through a model that includes primary care, behavioral health, oral health, substance use disorder treatment, family planning, optometry, HIV treatment/prevention, outreach and recuperative care. It provides these services and care to all patients regardless of insurance status or ability to pay. JWCH operates numerous health clinics, behavioral health programs, housing facilities and has a street medicine team.

Skid Row Care Campus
 The Skid Row Care Campus, which opened in Spring 2025, will be home to numerous SRAP Recommendations. The Campus will include the Safe Services Space in a park-like setting with hygiene resources, services, and recreational activities. It will also include a Harm Reduction Health Hub and Enriched Residential Care housing site.

Enriched Residential Care
 In the 1960s, many community-based "board-and-cares" were opened where people could live in residential communities and receive basic supports like prepared meals, housekeeping, medication management, assistance with bathing and dressing, and visits from clinicians. Board-and-Cares are licensed residential facilities that can provide permanent housing. In the past decade, the County Department of Health Services and Department of Mental Health have partnered with Board-and-Care providers to provide Enriched Residential Care, a higher level of supportive and clinical services for people who would otherwise struggle to live independently. The County opened the first Enriched Residential Care site at the Skid Row Care Campus.

Homeless Health Care Los Angeles (HHCLA)
 For over 30 years, HHCLA has provided harm reduction and supportive services to people who use drugs (PWUD) and experience homelessness in Skid Row. Starting with case management and behavioral health care, HHCLA added syringe exchange then integrated harm reduction into its Skid Row services. Today, HHCLA operates mobile overdose response units and a Center for Harm Reduction. All programs are tailored to the needs of PWUD experiencing homelessness, using evidence-based harm reduction strategies to protect their health, dignity, and social inclusion, regardless of their drug use.

Skid Row People's Market
 Skid Row People's Market is a neighborhood grocery shop responding to the food apartheid, structural racism and criminalization of poverty by creating access to healthy food and equitable jobs, while uplifting the creative spirit. Low-cost goods, fresh produce, SNAP/EBT accepted, and run by the community, the market combines the convenience store business model with grassroots community organizing. To support long-lasting regenerative economies, the market aims to remove structural barriers to employment, improve working conditions, increase wages, and build a safe, supportive work environment.

Community ReFresh Spot
 In 2017, the City of Los Angeles opened the first ReFresh Spot in Skid Row in response to strong community advocacy to expand access to hygiene infrastructure. Today, the ReFresh Spot is open 24 hours per day and provides access to free toilets, showers, laundry facilities, drinking water, and Wi-Fi. A wide variety of community partners also co-locate services at the ReFresh Spot. The ReFresh Spot is operated by Homeless Health Care Los Angeles.

Los Angeles Community Action Network (LA CAN)
 LA CAN is a one-of-a-kind force in the heart of Skid Row, seamlessly blending community organizing, arts and culture, and holistic wellness to empower local residents. By harnessing the transformative power of creative expression alongside organizing, LA CAN creates inclusive spaces where individuals can reclaim their narratives. Through innovative power building campaigns and collaborative community efforts, the organization not only amplifies the voices of those often unheard but also promotes a culture of healing and resistance and personal and collective transformation.

Skid Row History Museum & Archive
 The Skid Row History Museum & Archive is an exhibition/performing arts space and archive curated by Los Angeles Poverty Department (LAPD). LAPD is a multi-disciplinary arts organization that produces and presents artworks and events that instantiate the existence of the Skid Row community—affirming its assets, advocating for its rights, and supporting its aspirations. LAPD projects interweave exhibitions, publications, theatrical performances, public conversations, and cultural events. Programs are developed, produced, and performed collaboratively with Skid Row community members. Founded in 1985 by John Malpede, LAPD was the first performance group in the nation made up principally of people who have experienced homelessness and the first arts program of any kind for people who have experienced homelessness in Los Angeles.

Parks
 In Skid Row, the green spaces of the San Julian and General Jeff Memorial Parks provide essential respite from the elements, a sense of community, connection with resources, and relief from the stress and anxiety of the daily struggle of life in Skid Row. The parks serve as a central hub of community and host a wide range of community events.

Los Angeles Christian Health Centers (LACHC)
 The LACHC opened in 1995 with a big vision to render hope and healing through health care to the thousands of homeless and low-income residents living in LA County. As a nonprofit health services organization operating full-time licensed community clinics, part-time (state-recognized intermittent) clinic locations, and street outreach teams, LACHC receives health center program grant funds under Health Care for the Homeless and Public Housing Primary Care programs. LACHC's flagship clinic is located in Skid Row and LACHC operates street medicine teams as well.

Social Model Recovery Systems (SMRS) and Resident Councils
 SMRS's United Coalition East Prevention Project (UCEPP) provides targeted outreach and community programs and is a trusted and longstanding community partner. Led by UCEPP, Resident Councils provide opportunities for community members with lived experience related to specific homeless services programs to participate in the design and implementation of those programs. The Resident Councils represent the transition from community members serving in an advisory capacity to actively shaping programs and policies.

L.A. Catholic Worker Hospitality Kitchen (Hippie Kitchen)
 For over 50 years, the Hippie Kitchen has served delicious and healthy meals to anyone who shows up to eat. Everything they offer—their peaceful garden, their assorted hygiene giveaways, even the culture of their space—seeks to respect the dignity of those who use their services.

SKID ROW ACTION PLAN Skid Row Community Mapping Project

READ THE SKID ROW ACTION PLAN HERE:



The Skid Row Action Plan (SRAP) was launched in 2022 to improve the health and safety of the Skid Row community. It is the result of a robust community planning initiative and builds on the community infrastructure and strengths that have existed in this community for decades. The Action Plan reflects the aspirations and vision of community members, organizations and government partners. It lifts up existing community assets and organizations, while advocating for new resources and opportunities.

The Community Map is a visual representation of the arts, community, housing, and social services resources that are in Skid Row. Skid Row is a community that welcomes all people—where there are resources to help people heal in their darkest hour and community and connection that can sustain people for decades. The Community Map highlights this wide array of community assets and public resources that make Skid Row a unique and vibrant community.

SRAP Recommendation Areas

AFFORDABLE HOUSING
 Affordable housing in Skid Row started with Single Room Occupancy (SRO) buildings in the early 20th century. In the 1980s, non-profits began buying and renovating these buildings, and in the 1990s, rental subsidies were introduced. The early 2000s saw the rise of Permanent Supportive Housing, offering housing, subsidies, and support services. Today, Skid Row has a mix of housing options: SROs with and without subsidies, and new affordable and supportive housing, provided by both for-profit and non-profit organizations.

HARM REDUCTION
 The Skid Row Harm Reduction strategies is a community-driven public health approach which prioritizes health improvement while acknowledging the safety and dignity of all, regardless of substance use. Harm Reduction includes Health Hubs (offering drop-in services, health care, community building, and community respite beds), Overdose Prevention Teams, Needle Exchange, Opioid Treatment, and distribution of harm reduction supplies.

INTERIM HOUSING
 The Union Rescue Mission, Skid Row's first religious mission (1891), initially offered tents to people with nowhere to sleep. Many missions followed, playing a crucial role during the Great Depression and beyond. The 1980s saw the rise of street homelessness, prompting secular non-profits to open shelters. These shelters, often crowded and rule-heavy, were undesirable for some. The 21st century saw a push for low-barrier shelters with more privacy, leading to the term "Interim Housing" replacing "shelter." Today, Skid Row has more Interim Housing than any other LA neighborhood, offering both shared living spaces and individual rooms. Some interim housing is privately funded, while government-funded programs utilize the Skid Row Access Center to centralize access to these programs.

HEALTH CARE
 The Skid Row Care Collaborative is a partnership of JWCH Institute (Wesley Health Centers), Los Angeles Christian Health Centers and the Los Angeles County Department of Health Services (DHS). The Care Collaborative improves health outcomes for the Skid Row community by improving access to behavioral health and medical care, integrating healthcare and housing resources, and strengthening collaboration across health providers. The Care Collaborative enhances these services across three Skid Row health clinics: JWCH's Center for Community Health, Los Angeles Christian Health Centers' Joshua House and DHS' Star Clinic.

SAFE SERVICES
 The Skid Row Action Plan called for a community-led Safe Services Space, or the Skid Row Care Campus, which will open in Spring 2025 after two years of planning. Community Ambassadors will be present to support community members using the space. The Campus will be operated by HHCLA, JWCH Institute, and Social Model Recovery Systems.

ECONOMIC OPPORTUNITY
 The Skid Row Action Plan prioritizes creating local economic opportunities through creating community-responsive employment and entrepreneurial pathways. These include prioritizing community-based hiring, supportive recruitment and retention practices, building the capacity of the local workforce, establishing Community Ambassadors, and supporting local entrepreneurship. This work is being led by local community-based organizations including Chrysalis, Coalition for Responsible Community Development, and Downtown Women's Center.





Ellis Hotel – SRO Housing

SMRS / UCEPP
socialmodelrecovery.org/services/united-coalition-east-ucepp/

La Jolla Hotel – SRO Housing Corporation
srohousing.org

Eugene – SRO Housing

Hippie Kitchen
lacatholicworker.org

Public Toilet

General Jeff Page Park

LAGAN

Los Angeles Community Action Network
cangress.org

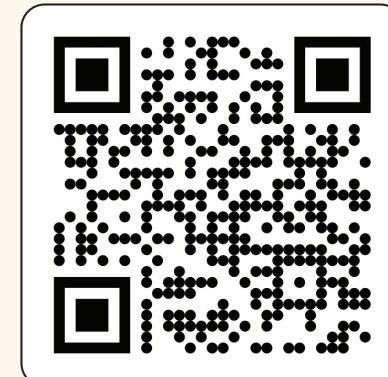


"When I first came to Skid Row, I was introduced to a man named Cake Man, and Cake Man will make your day—super cool, breakfast sandwiches, best cake you could have. Everyone knows him."
— Skid Row Resident

Skid Row Community Stories

The number of heroes who have contributed to the Skid Row community are too many to be listed here and tell more stories than can fit on this map. Please visit the LA Poverty Department's list of Walk the Talk honorees to learn about some of those community heroes.

READ ABOUT THE HONOREES HERE:



Biddy Mason

Mother Bridget 'Biddy' Mason (1818-1891) is an American Hero and humanitarian. Born enslaved, Mason won her freedom through a court of law and became one of the first prominent citizens and landowners in Los Angeles in the 1850s and 1860s. She also founded the First African Methodist Episcopal Church in Los Angeles in 1872 and cared for the sick and homeless in the area that is now Skid Row. Her story provides inspiration to many Skid Row residents today.



Africa

Charly "Africa" Keunang was born in Cameroon and immigrated to the United States. He lived with mental health issues and stayed in a tent on Skid Row. He had a number of friends in the community and was well-liked. In 2015, when he was 43 years old, two Los Angeles Police Department officers fatally shot Africa who was unarmed. Africa's murder sparked a series of protests against police brutality. In 2018 the two police officers were found liable for Africa's murder, and the City settled the lawsuit for \$1.95 million.



General Jeff

General Jeff Page, affectionately called the Mayor of Skid Row, was a West Coast Hip-Hop pioneer who later became a Skid Row activist and community leader. He came to Skid Row in 2006 determined to bring positivity to the community. He led a variety of clubs and founded a 3-on-3 basketball league. He campaigned to improve life in the community from fighting for investments in parks to fighting against police brutality. He made it his life's mission to ensure decision makers understood Skid Row's cultural and socioeconomic history. In 2022 Gladys Park was renamed General Jeff Park in honor of his legacy and commitment to Skid Row.

Skid Row Park Advisory Board

Started by General Jeff, Skid Row PAB consists of individuals who are community residents, business members, and those who work or spend time in the community. The mission of the PAB is to strengthen recreation programs and services of both of the parks in Skid Row: General Jeff Park and San Julian Park.



The White House

The White House Community Center is a donation drop off location at 6th & San Pedro that is open 24 hours as a safe haven for the homeless on Skid Row. Known for its cleanliness, it's a place to get out of the rain and to get some shade. The White House consists of canopies, and tables and chairs are available for volunteers. Resources include free coffee, water, meals, clothing, shoes, blankets, tents, phone charging, and housing resources. It is a place to rest and socialize. Stephanie, its founder, the Queen of Skid Row, is fighting for a new revolution.



Urban Voices Project (UVP) Choir

The UVP Choir is composed of artists and performers from the Skid Row neighborhood, currently or formerly disenfranchised by homelessness. Throughout the year, they share music and its healing power with many audiences inside and outside Skid Row. Through outreach the group shares the stories and the successes of integrating music and community singing into a holistic system for combating the homelessness crisis.

UVP was founded by Colburn School Teaching Artist Leeav Sofer, director of the choir and UVP programs, and "The Urban Sag," Christopher Mack, a singing community outreach coordinator who has been walking the streets of Skid Row for Wesley Health Centers for the past 14 years. Kate Richards Geller, a music therapy consultant, advises the project and offers a strong foundation in healing and wellness across the organization.



Skid Row Arts Alliance

The Skid Row Arts Alliance is a consortium of artist-driven arts organizations, working to create art and community in Skid Row. The purpose of the Alliance is to knit the fabric of the neighborhood through community-wide arts projects. These projects bring together individuals living and working in Skid Row, including people not previously connected to community groups and services. The aim of the Alliance is to represent, amplify and celebrate the voices of the Skid Row community.

Mobile Resources

The community infrastructure is not complete without acknowledgement of the many mobile organizations that support the Skid Row community, including, but not limited to:

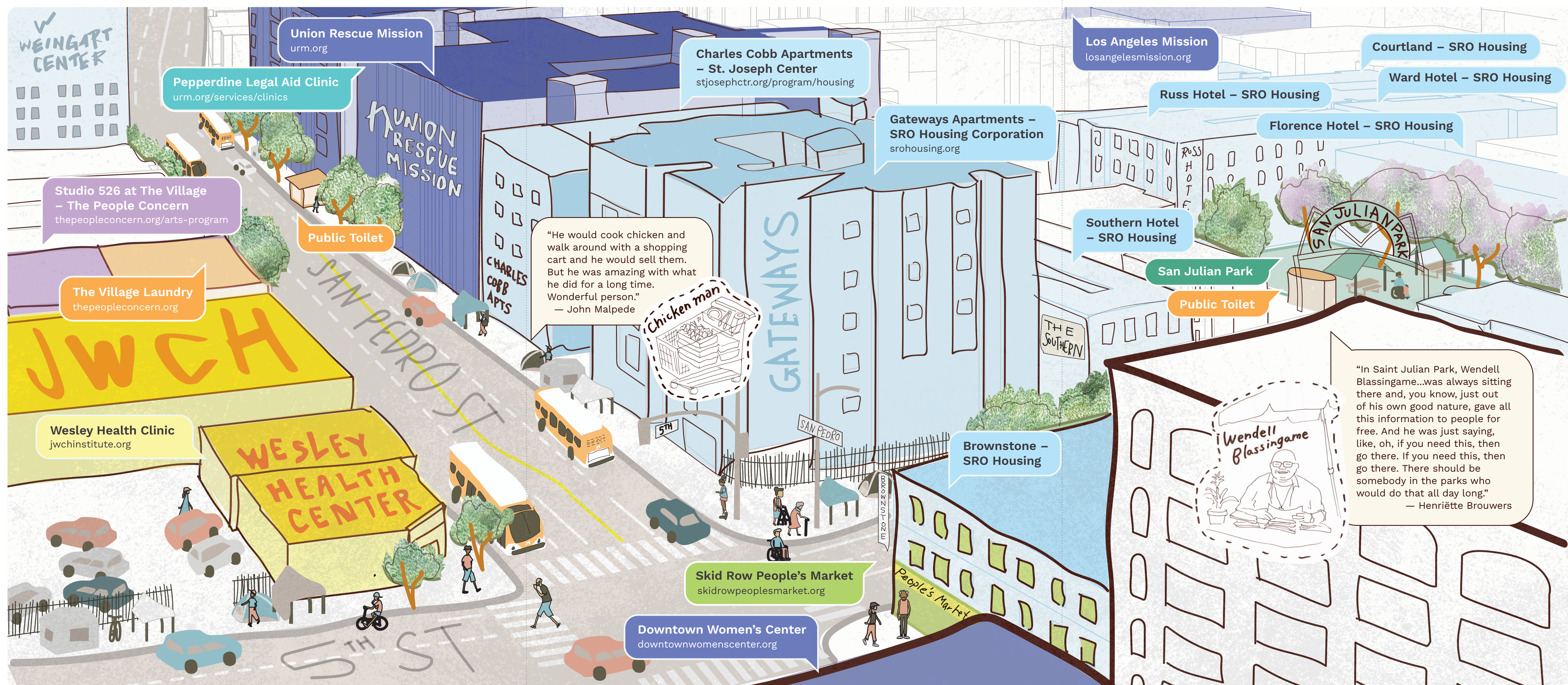
- **Water Drop LA (WDLA)** is a mutual aid organization that provides 2,200+ gallons of clean, free drinking water to residents throughout the Skid Row neighborhood every Sunday. At the same time, a van is set up distributing water, snacks, hygiene products, and other essentials outside Catch 21. waterdropla.org
- **Food Not Bombs DTLA (FNB DTLA)** serves vegan food every Saturday and some Wednesdays at General Jeff Park. FNB also takes donations, such as clothing, blankets and toiletries, to distribute around Skid Row. foodnotbombsdtla.wixsite.com/foodnotbombsdtla
- **The Good Karma LA**, on a monthly basis, prepares 500 hot fresh meals, 500 water bottles, 500 granola

bars, and 500 hydration packs, and essentials for unhoused neighbors. Volunteers distribute these donations on foot every first Sunday. thegoodkarmala.org

- **Sharing Love With Others** endeavors to enhance the quality of life of unhoused neighbors on Skid Row by providing warm meals, water, medical services, clothing, and more. The group distributes food every Saturday on 7th between San Pedro and Crocker and organize cleanup days once a month. sharinglovewithothers.org
- **Solidarity and Snacks (SASS)** is a mutual aid group distributing supplies, such as masks, snacks, and water, at 6th and San Pedro every Saturday. solidarityandsnacks.com
- **Underdog Community Project (UCP)** provides free and quality veterinary services, pet support, and resources for the beloved pets of unhoused and minority individuals through a monthly clinic at Midnight Mission and pop ups. underdogcommunityproject.org

Legal Resources

- **Inner City Law Center** is the only legal-services provider located in Skid Row. It advocates for equitable housing policies and provides legal services to prevent and end homelessness.
- **The Pepperdine Legal Aid Clinic** at the Union Rescue Mission partners with Pepperdine's Caruso School of Law and Covenant House of California for direct legal assistance to clients overcoming homelessness in Skid Row through appointments.
- **The Skid Row Housing Clinic** is operated by LA CAN in partnership with LAFLA (Legal Aid Foundation of Los Angeles) and UCLA's El Centro Legal. The clinic occurs every first and third Wenesday at LA CAN.
- **The Community Outreach Court**, sponsored by LA County, helps people experiencing homelessness resolve legal matters blocking access to housing, jobs, and social services. The court convenes monthly every third Thursday at the ReFresh Spot.



Union Rescue Mission
urm.org

Pepperdine Legal Aid Clinic
urm.org/services/clinics

Charles Cobb Apartments – St. Joseph Center
stjosephctr.org/program/housing

Los Angeles Mission
losangelesmission.org

Courtland – SRO Housing

Ward Hotel – SRO Housing

Russ Hotel – SRO Housing

Florence Hotel – SRO Housing

Southern Hotel – SRO Housing

San Julian Park

Public Toilet

Gateways Apartments – SRO Housing Corporation
srohousing.org

Brownstone – SRO Housing

Skid Row People's Market
skidrowpeoplesmarket.org

Downtown Women's Center
downtownwomenscenter.org

The Village Laundry
thepeopleconcern.org

Wesley Health Clinic
jwcinstitute.org

Studio 526 at The Village – The People Concern
thepeopleconcern.org/arts-program

Public Toilet

"He would cook chicken and walk around with a shopping cart and he would sell them. But he was amazing with what he did for a long time. Wonderful person."
— John Malpede



"In Saint Julian Park, Wendell Blassingame...was always sitting there and, you know, just out of his own good nature, gave all this information to people for free. And he was just saying, like, oh, if you need this, then go there. If you need this, then go there. There should be somebody in the parks who would do that all day long."
— Henriëtte Brouwers